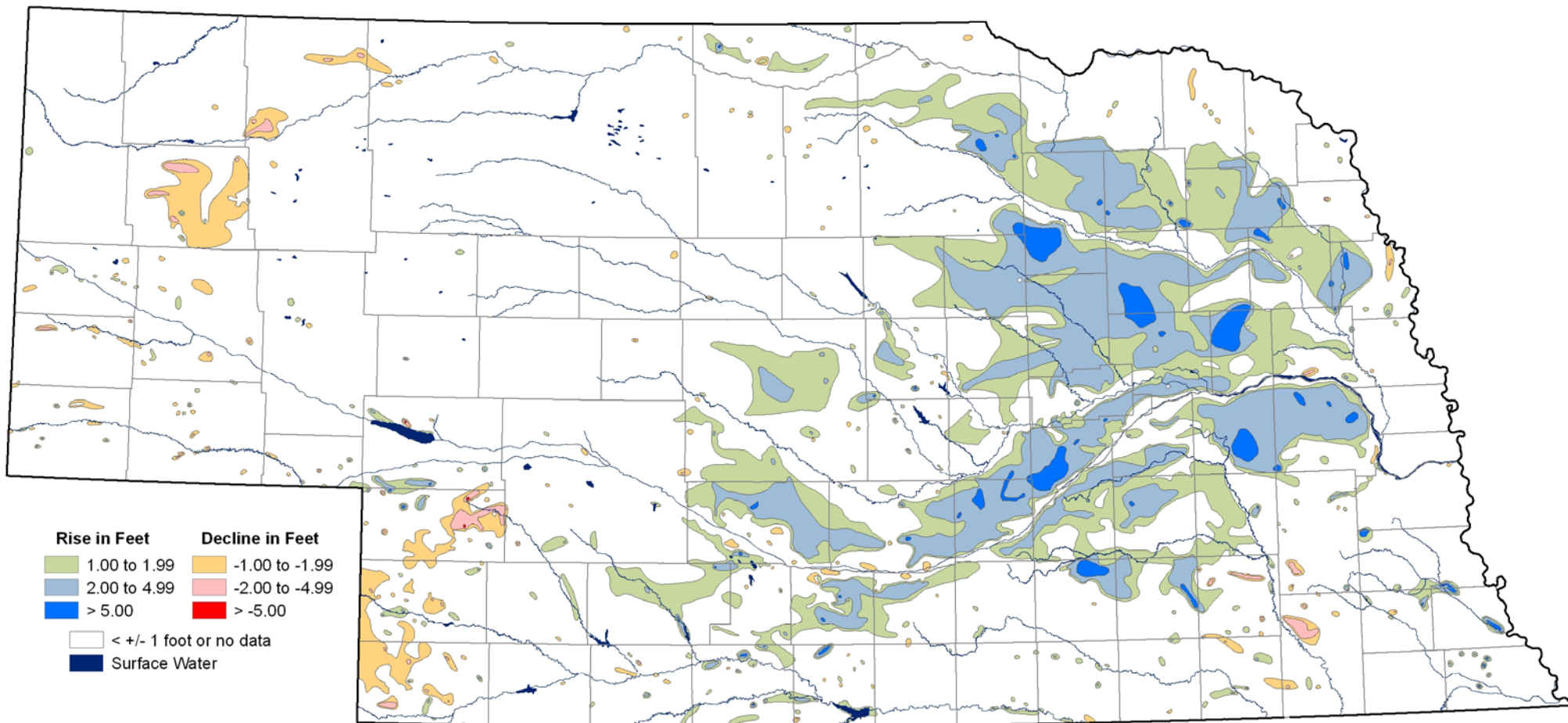


Groundwater-level Changes in Nebraska - Spring 2007 to Spring 2008



Rise in Feet	Decline in Feet
 1.00 to 1.99	 -1.00 to -1.99
 2.00 to 4.99	 -2.00 to -4.99
 > 5.00	 > -5.00
 < +/- 1 foot or no data	
 Surface Water	

CONSERVATION AND SURVEY DIVISION (<http://csd.unl.edu>)
 School of Natural Resources (<http://snr.unl.edu>)
 Institute of Agriculture and Natural Resources
 University of Nebraska-Lincoln

Mark Burbach, Water Levels Coordinator, CSD

U.S. Geological Survey
 Nebraska Water Science Center

U.S. Bureau of Reclamation
 Kansas-Nebraska Area Office

Nebraska Natural Resources Districts

Central Nebraska Public Power and Irrigation District

N School of Natural Resources
IANR Institute of Agriculture and Natural Resources
 University of Nebraska-Lincoln

The University of Nebraska-Lincoln does not discriminate based on gender, age, disability, race, color, religion, marital status, veteran's status, national or ethnic origin, or sexual orientation.

September 2008