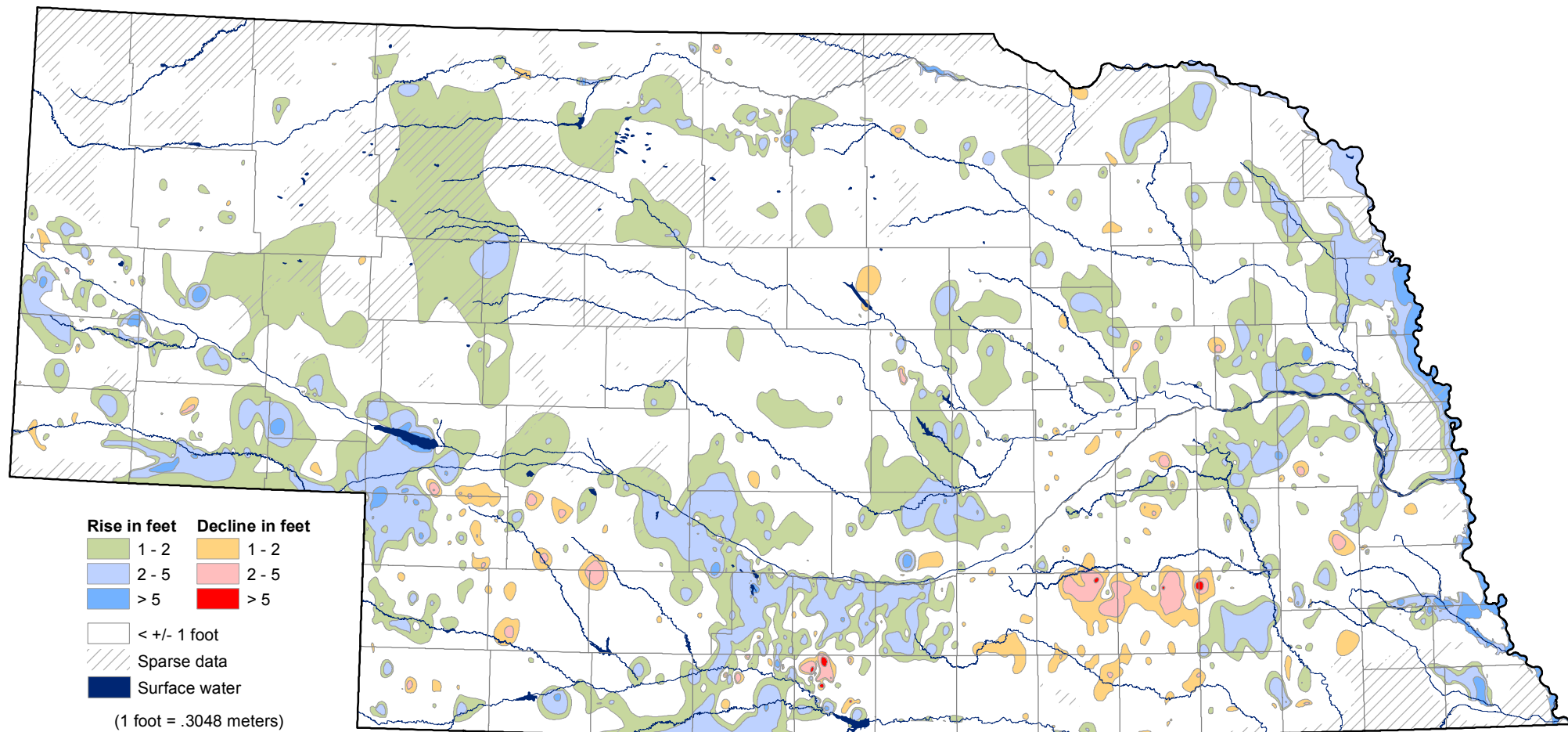


# Groundwater-level Changes in Nebraska - Spring 2009 to Spring 2010



CONSERVATION AND SURVEY DIVISION (<http://snr.unl.edu/csd>)  
 School of Natural Resources (<http://snr.unl.edu>)  
 Institute of Agriculture and Natural Resources  
 University of Nebraska-Lincoln

Jesse Korus, Groundwater Resources Coordinator, CSD  
 Mark Burbach, Water Levels Program Supervisor, CSD  
 Les Howard, GIS Manager, CSD  
 Matt Joeckel, Research Geologist, CSD

U.S. Geological Survey  
 Nebraska Water Science Center

U.S. Bureau of Reclamation  
 Kansas-Nebraska Area Office

Nebraska Natural Resources Districts

Central Nebraska Public Power and Irrigation District

**N** School of Natural Resources  
**IANR** Institute of Agriculture and Natural Resources  
 University of Nebraska-Lincoln

The University of Nebraska-Lincoln does not discriminate based on gender, age, disability, race, color, religion, marital status, veteran's status, national or ethnic origin, or sexual orientation.

December 2010