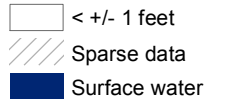
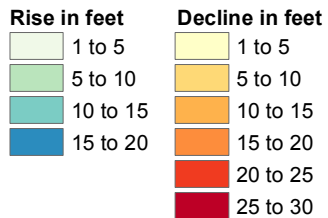
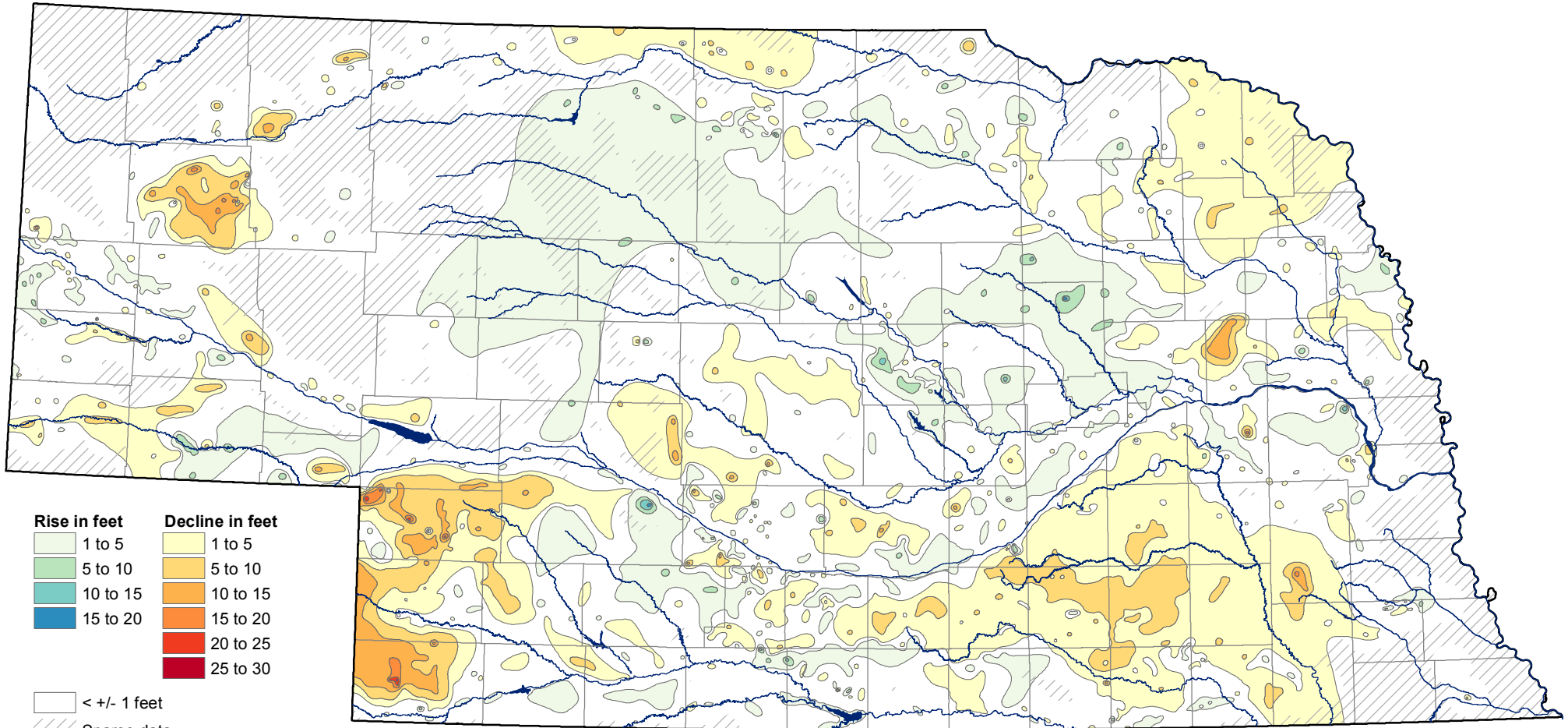


# Groundwater-level Changes in Nebraska - Spring 2004 to Spring 2014



(1 foot = .3048 meters)

CONSERVATION AND SURVEY DIVISION (<http://snr.unl.edu/csd>)  
 School of Natural Resources (<http://snr.unl.edu>)  
 Institute of Agriculture and Natural Resources  
 University of Nebraska-Lincoln

Aaron Young, Survey Geologist, CSD  
 Mark Burbach, Water Levels Program Supervisor, CSD  
 Les Howard, GIS Manager, CSD

U.S. Geological Survey  
 Nebraska Water Science Center

U.S. Bureau of Reclamation  
 Kansas-Nebraska Area Office

Nebraska Natural Resources Districts

Central Nebraska Public Power and Irrigation District

**School of Natural Resources**  
**Institute of Agriculture and Natural Resources**  
**IANR University of Nebraska-Lincoln**

*The University of Nebraska-Lincoln does not discriminate based on gender, age, disability, race, color, religion, marital status, veteran's status, national or ethnic origin, or sexual orientation.*

**December 2014**