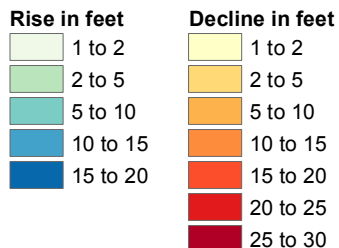
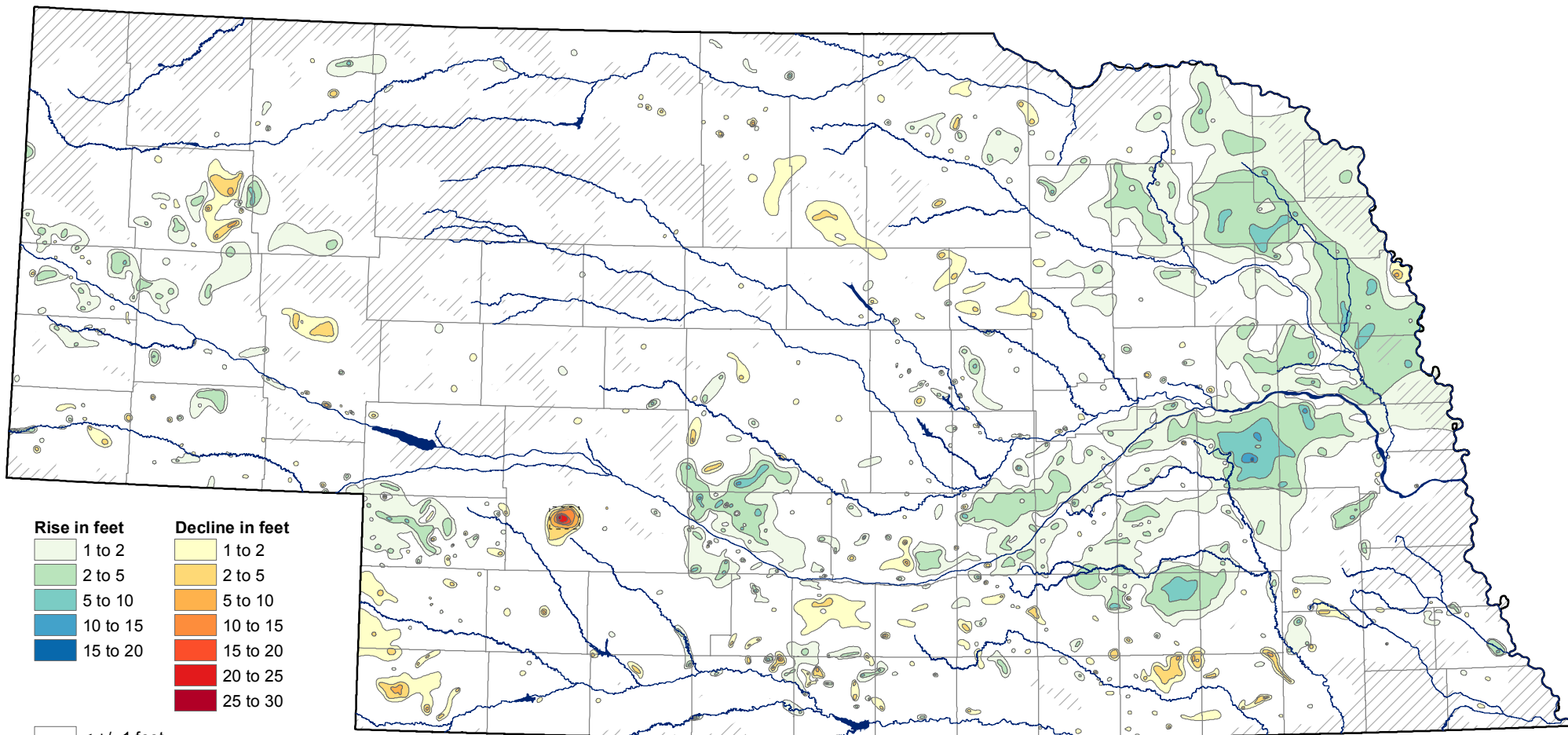


Groundwater-Level Changes in Nebraska - Spring 2014 to Spring 2015



< +/- 1 feet

Sparse data

Surface water

(1 foot = .3048 meters)

Area of non-static conditions

CONSERVATION AND SURVEY DIVISION (<http://snr.unl.edu/csd>)
 School of Natural Resources (<http://snr.unl.edu>)
 Institute of Agriculture and Natural Resources
 University of Nebraska-Lincoln

Aaron Young, Survey Geologist, CSD
 Mark Burbach, Water Levels Program Supervisor, CSD
 Les Howard, GIS Manager, CSD

U.S. Geological Survey
 Nebraska Water Science Center

U.S. Bureau of Reclamation
 Kansas-Nebraska Area Office

Nebraska Natural Resources Districts

Central Nebraska Public Power and Irrigation District

School of Natural Resources
Institute of Agriculture and Natural Resources
IANR University of Nebraska-Lincoln

The University of Nebraska-Lincoln does not discriminate based on gender, age, disability, race, color, religion, marital status, veteran's status, national or ethnic origin, or sexual orientation.

December 2015