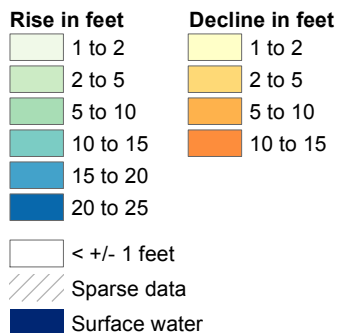
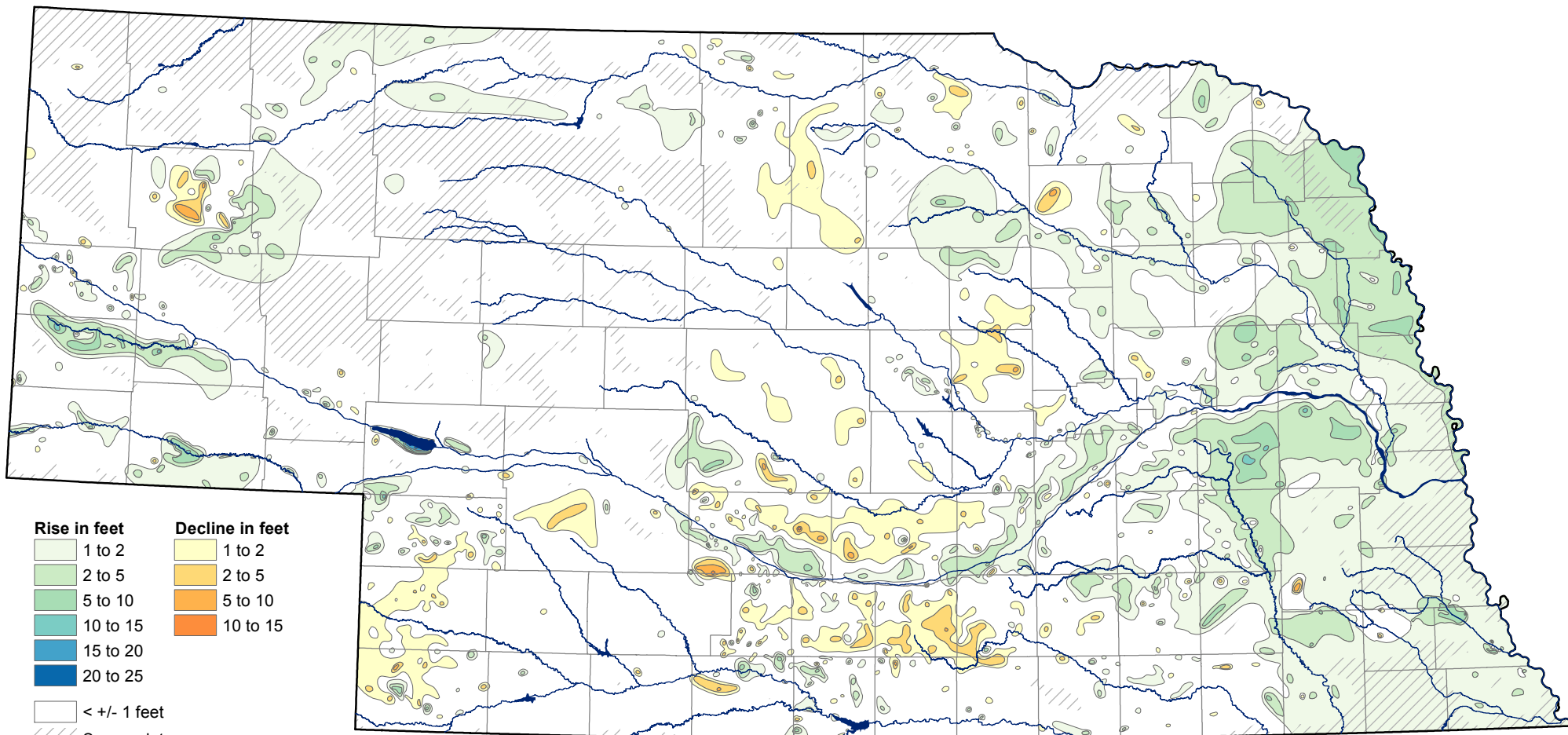


# Groundwater-Level Changes in Nebraska - Spring 2015 to Spring 2016



(1 foot = .3048 meters)

*For an explanation of information presented on this map, see the 2016 Nebraska Statewide Groundwater-Level Monitoring Report, available for download at [go.unl.edu/groundwater](http://go.unl.edu/groundwater)*

CONSERVATION AND SURVEY DIVISION (<http://snr.unl.edu/csd>)  
 School of Natural Resources (<http://snr.unl.edu>)  
 Institute of Agriculture and Natural Resources  
 University of Nebraska-Lincoln

Aaron Young, Survey Geologist, CSD  
 Mark Burbach, Water Levels Program Supervisor, CSD  
 Les Howard, GIS Manager, CSD  
 Michele Waszgis, Research Technician, CSD

U.S. Geological Survey  
 Nebraska Water Science Center

U.S. Bureau of Reclamation  
 Kansas-Nebraska Area Office

Nebraska Natural Resources Districts

Central Nebraska Public Power and  
 Irrigation District