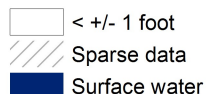
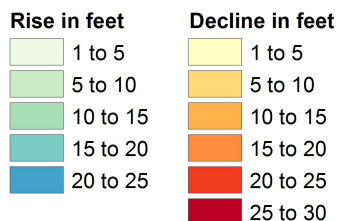
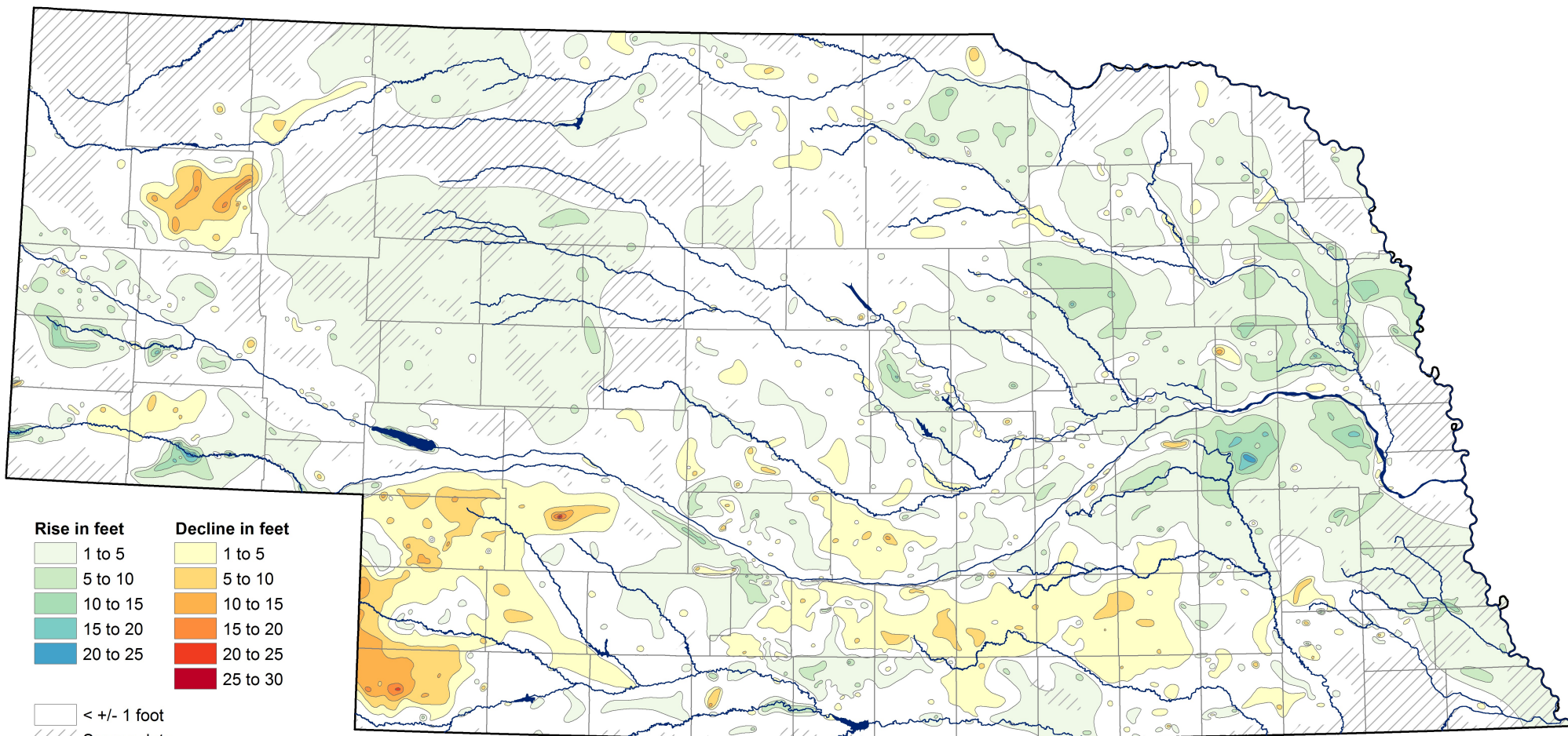


# Groundwater-Level Changes in Nebraska - Spring 2007 to Spring 2017



(1 foot = .3048 meters)

*For an explanation of information presented on this map, see the 2017 Nebraska Statewide Groundwater-Level Monitoring Report, available for download at [go.unl.edu/groundwater](http://go.unl.edu/groundwater)*

CONSERVATION AND SURVEY DIVISION (<http://snr.unl.edu/csd>)  
 School of Natural Resources (<http://snr.unl.edu>)  
 Institute of Agriculture and Natural Resources  
 University of Nebraska-Lincoln

Aaron Young, Survey Geologist, CSD  
 Mark Burbach, Water Levels Program Supervisor, CSD  
 Les Howard, GIS Manager, CSD

U.S. Geological Survey  
 Nebraska Water Science Center

U.S. Bureau of Reclamation  
 Kansas-Nebraska Area Office

Nebraska Natural Resources Districts

Central Nebraska Public Power and  
 Irrigation District