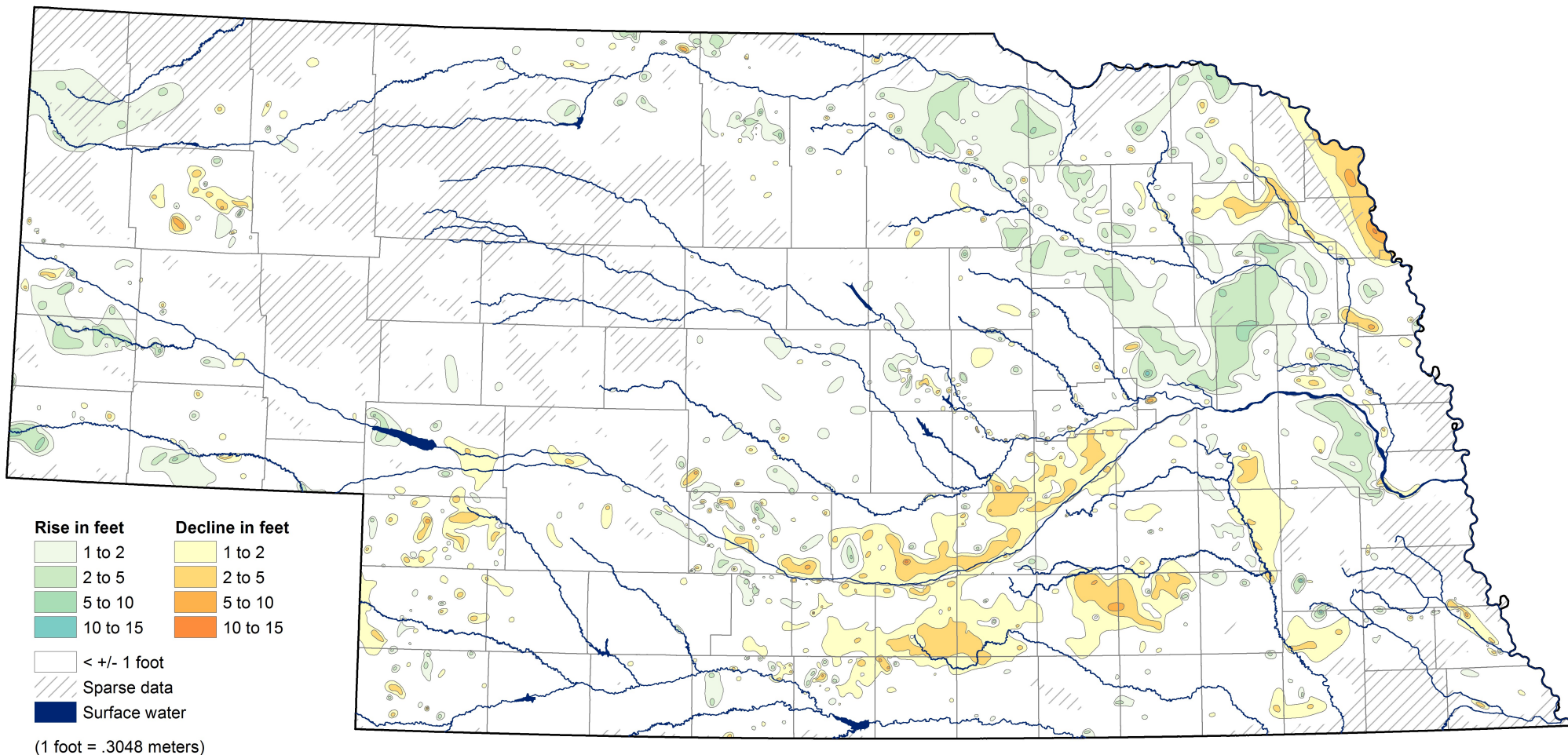


Groundwater-Level Changes in Nebraska - Spring 2016 to Spring 2017



For an explanation of information presented on this map, see the 2017 Nebraska Statewide Groundwater-Level Monitoring Report, available for download at go.unl.edu/groundwater

CONSERVATION AND SURVEY DIVISION (<http://snr.unl.edu/csd>)
 School of Natural Resources (<http://snr.unl.edu>)
 Institute of Agriculture and Natural Resources
 University of Nebraska-Lincoln

Aaron Young, Survey Geologist, CSD
 Mark Burbach, Water Levels Program Supervisor, CSD
 Les Howard, GIS Manager, CSD

U.S. Geological Survey
 Nebraska Water Science Center

U.S. Bureau of Reclamation
 Kansas-Nebraska Area Office

Nebraska Natural Resources Districts

Central Nebraska Public Power and
 Irrigation District