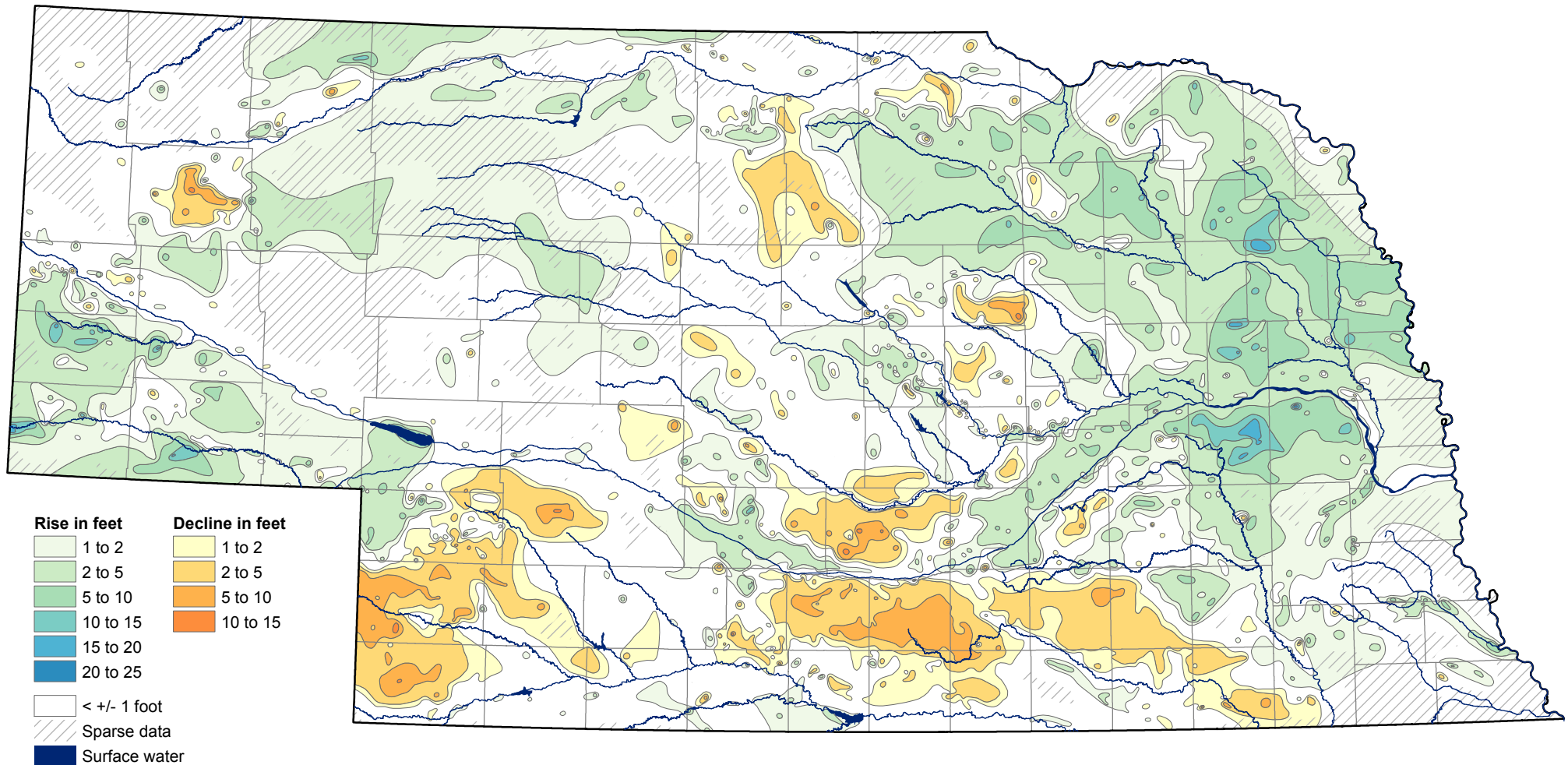


Groundwater-Level Changes in Nebraska - Spring 2013 to Spring 2018



(1 foot = .3048 meters)

For an explanation of information presented on this map, see the 2018 Nebraska Statewide Groundwater-Level Monitoring Report, available for download at go.unl.edu/groundwater

CONSERVATION AND SURVEY DIVISION (<http://snr.unl.edu/csd>)
School of Natural Resources (<http://snr.unl.edu>)
Institute of Agriculture and Natural Resources
University of Nebraska-Lincoln

Aaron Young, Survey Geologist, CSD
Mark Burbach, Water Levels Program Supervisor, CSD
Les Howard, GIS Manager, CSD

Data provided by:

Nebraska Natural Resources Districts
Central Nebraska Public Power and Irrigation District
U.S. Geological Survey
Nebraska Water Science Center
U.S. Bureau of Reclamation
Kansas-Nebraska Area Office
Conservation and Survey Division,
University of Nebraska - Lincoln

December 2018