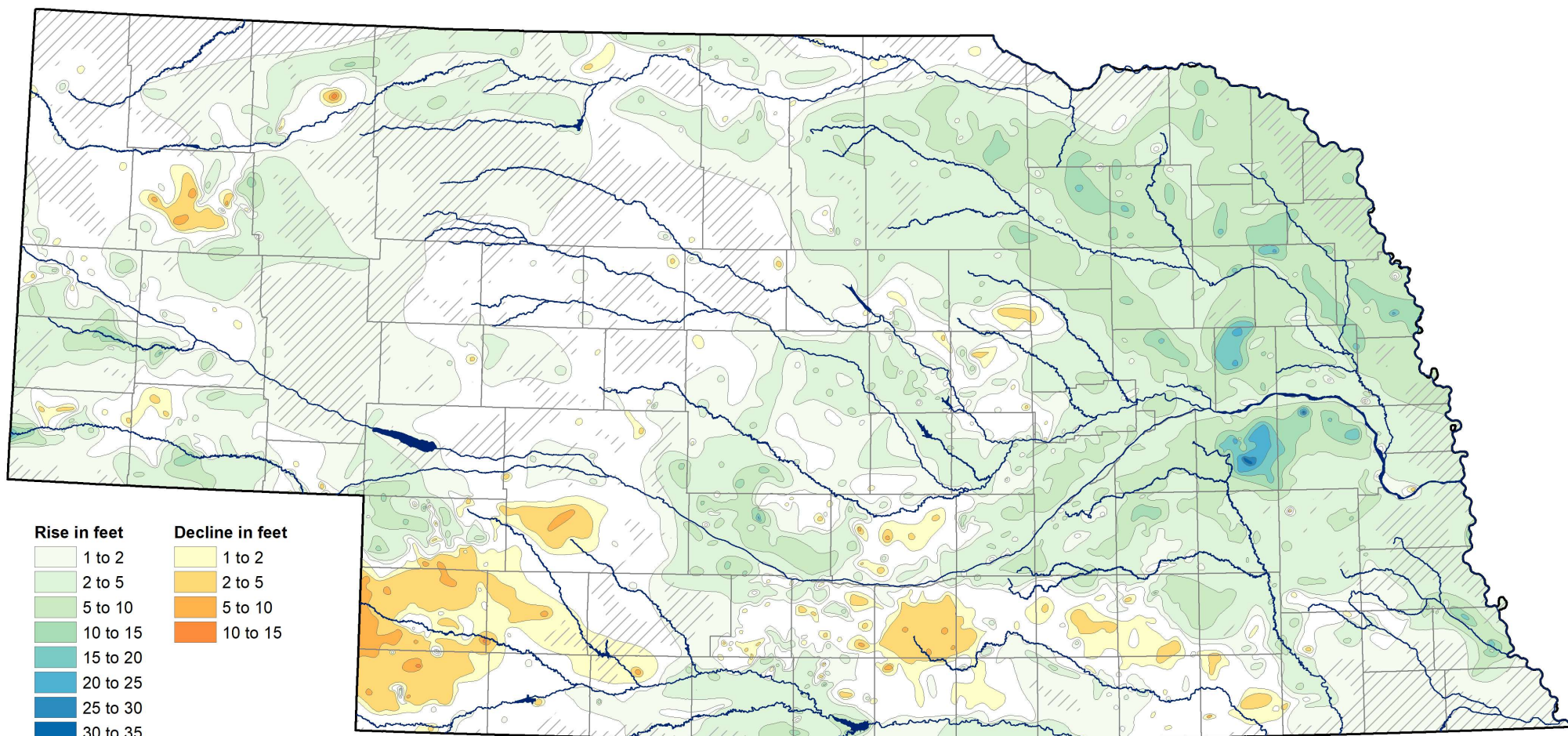


Groundwater-Level Changes in Nebraska - Spring 2014 to Spring 2019



Rise in feet

1 to 2
2 to 5
5 to 10
10 to 15
15 to 20
20 to 25
25 to 30
30 to 35

Decline in feet

1 to 2
2 to 5
5 to 10
10 to 15

< +/- 1 foot

Sparse data

Surface water

(1 foot = .3048 meters)

For an explanation of information presented on this map, see the 2019 Nebraska Statewide Groundwater-Level Monitoring Report, available for download at go.unl.edu/groundwater

CONSERVATION AND SURVEY DIVISION (<http://snr.unl.edu/csd>)
School of Natural Resources (<http://snr.unl.edu>)
Institute of Agriculture and Natural Resources
University of Nebraska-Lincoln

Aaron Young, Survey Geologist, CSD
Mark Burbach, Water Levels Program Supervisor, CSD
Les Howard, GIS Manager, CSD

Data provided by:

Nebraska Natural Resources Districts
Central Nebraska Public Power and Irrigation District
U.S. Geological Survey
Nebraska Water Science Center
U.S. Bureau of Reclamation
Kansas-Nebraska Area Office
Conservation and Survey Division,
University of Nebraska - Lincoln