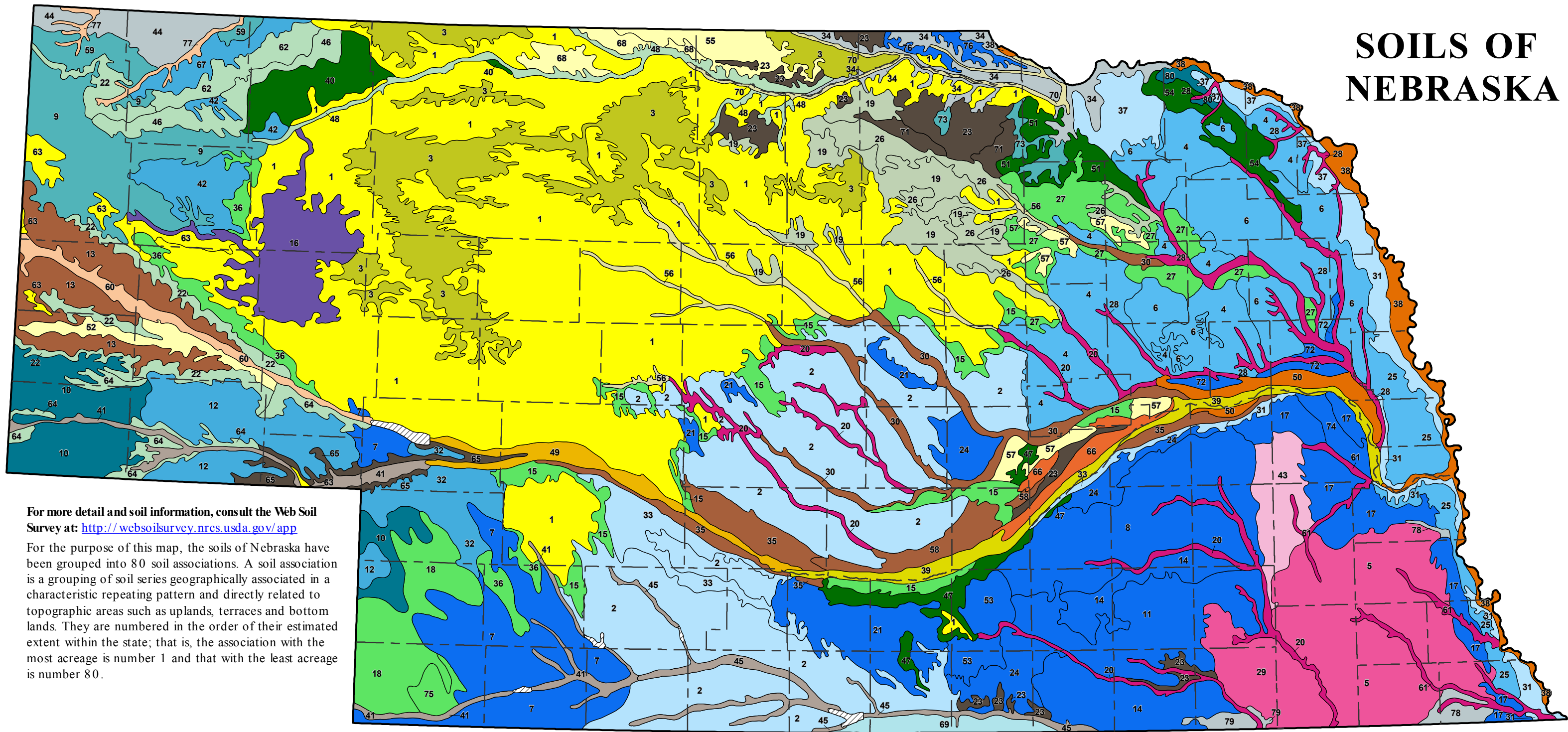


SOILS OF NEBRASKA



For more detail and soil information, consult the Web Soil Survey at: <http://websoilsurvey.nrcs.usda.gov/app>

For the purpose of this map, the soils of Nebraska have been grouped into 80 soil associations. A soil association is a grouping of soil series geographically associated in a characteristic repeating pattern and directly related to topographic areas such as uplands, terraces and bottom lands. They are numbered in the order of their estimated extent within the state; that is, the association with the most acreage is number 1 and that with the least acreage is number 80.

1. VALENTINE	13. TRIPP-MITCHELL-ALICE	25. MARSHALL-PONCA	37. CROFTON-ALCESTER-NORA	49. LAWET-GOTHENBURG-PLATTE	61. KENNEBEC-NODAWAY-ZOOK	73. BRUNSWICK-PAKA-SIMEON
2. COLY-ULY-HOLDREGE	14. HASTINGS-CRETE-FILLMORE	26. ELSMERE-IPAGE-LOUP	38. ALBATON-HAYNIE-SARPY	50. GIBBON-ZOOK	62. CANYON-BRIDGET-OTLALA	74. SHARPSBURG-FILLMORE
3. VALENTINE-ELSMERE-TRYON	15. HERSH-VALENTINE	27. THURMAN-BOELUS-NORA	39. GIBBON-GOTHENBURG-PLATTE	51. BAZILE-THURMAN-BOELUS	63. VALENT	75. JAYEM-KEITH
4. NORA-CROFTON-MOODY	16. VALENTINE-ELS-WILDHORSE	28. SHELL-MUIR-HOBBS	40. SATANTA-JAYEM-CANYON	52. VALENT-SARBEN-OTERO	64. CANYON-ROSEBUD-ROCK OUTCROP	76. ONITA-RELIANCE-REE
5. WYMORE-PAWNEE-BURCHARD	17. SHARPSBURG	29. CRETE-MAYBERRY-BURCHARD	41. BRIDGET-TRIPP-McCOOK	53. HASTINGS-HOLDER	65. DIX-ALTVAN-COLBY	77. HAVERSON-TRIPP-GLENBURG
6. NORA-MOODY-JUDSON	18. VALENT -WOODLY-JAYEM	30. HORD-COZAD-BOEL	42. KEITH- ALLIANCE -ROSEBUD	54. MOODY-THURMAN	66. GIBBON-WANN	78. KIPSON-SOIGN-WYMORE
7. KUMA-KEITH-COLBY	19. ELS-VALENTINE-IPAGE	31. MONONA-IDA	43. SHARPSBURG-PAWNEE-STEINAUER	55. VALENTINE-TASSEL	67. KADOKA-KEITH-MITCHELL	79. LANCASTER-BENFIELD-CRETE
8. HASTINGS-FILLMORE	20. HOBBS-HORD	32. KUMA-SATANTA-ROSEBUD	44. PIERRE-SAMSIL-KYLE	56. ALMERIA-BOLENT-CALAMUS	68. VALENTINE-HENNINGS-RONSON	80. LORETTO-REDSTOE-GAVINS
9. BUSER-SARBEN-TASSEL	21. HOLDREGE-ULY-COLY	33. COLY-ULY	45. HORD-McCOOK-INAVAL	57. VALENTINE-THURMAN	69. NUCKOLLS-HOLDREGE-CAMPUS	100. Water
10. ROSEBUD-ALLIANCE-CANYON	22. TASSEL-BUSER-ROCK OUTCROP	34. LABU-BRISTOW-SANSARC	46. CANYON-ALLIANCE-ROSEBUD ASSOCIATION	58. HORD-HALL	70. INAVAL-BOEL-BARNEY	
11. CRETE-HASTINGS-BUTLER	23. JANSEN-O'NEILL-MEADIN	35. COZAD-HORD	47. KENESAW-HERSH	59. BUFTON-ORELLA-NORREST	71. DUNDAY-PIVOT	
12. ALLIANCE-ROSEBUD-KUMA	24. HOLDER-ULY-COLY	36. JAYEM-SARBEN-VALENT	48. TASSEL-MCKELVIE-ROCK OUTCROP	60. GOTHENBURG-PLATTE-LAWET	72. MOODY-FILLMORE	