



NEW MEXICO BRUSH CONTROL

**CONSIDERATIONS FOR
INVASIVE WOODY PLANT
MANAGEMENT**



CONSIDERATIONS

- What are the long term management goals?

CONSIDERATIONS

- What are the long term management goals?
- What are the available tools?

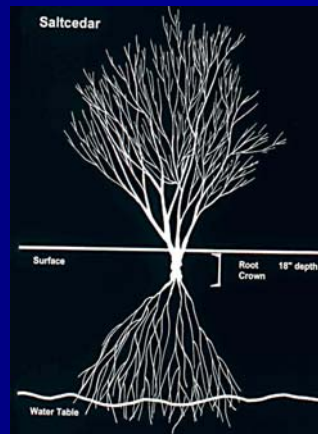
CONSIDERATIONS

- What are the long term management goals?
- What are the available tools?
- Choose the tools that will satisfy the management goals.

CONSIDERATIONS

- What are the long term management goals?
- What are the available tools?
- Choose the tools that will satisfy the management goals.
- Consider each project to be a new and different project.

Key to Saltcedar Control – Destroy the Root Crown

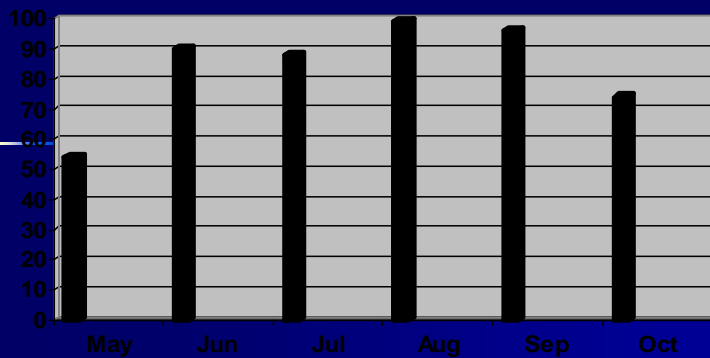




Aerial spraying

- Apply Arsenal® or Habitat® at 2 qt. product/ac.
- ~90% plant kill.
- Large tract vs precision spraying.





Mean saltcedar Mortality by Month of Treatment Across All Sites and Years for a 1.0% Solution of imazapyr Foliar Applied to Individual Plants for Trials in New Mexico, 1987-1994

Individual Plant Control

- Cut stump apply 33% Garlon4 + 67% crop or diesel oil.
- Foliar spray 1% v/v Arsenal with water or Rodeo + Arsenal (0.5 + 0.5%)
- Russian Olive: 5-7% Rodeo in June-July



Mechanical Control



**Treatment is
accomplished
: Now What?**

**It's good land
stewardship**

It's expensive



STARTING TODAY

Where do we go?

What do we do?



THE MAJOR PROBLEM?!

**Recognition of the
issue**

Agreement on actions



WHAT HAS TO HAPPEN!!

**Cooperation between
private land owners
and ALL agencies**





We can only see with open eyes

We can only hear with open ears

We can only think with open minds

