

NEBRASKA WEED CONTROL ASSOCIATION

2807 W 2nd Street -
Grand Island, NE 68803

Phone: 308-385-5097

Fax: 308-385-5121

www.neweed.org

Other Sites of Interest:

Nebraska On-line Weed Mapping site

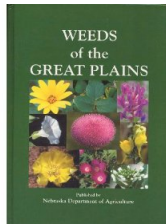
www.neweedmapper.org

Weed Free Forage website

www.neweedfree.org

Nebraska Invasive Species Council

www.snr.unl.edu/invasives



Materials derived from
Weeds of the Great Plains – Published
by the Nebraska Dept. of Agriculture.
Contact the NDA at at
PO Box 94756
Lincoln, NE 68509
Or order from the website
[http://www.agr.state.ne.us/division/bpi/
nwp/nwp1.htm](http://www.agr.state.ne.us/division/bpi/nwp/nwp1.htm)



Nebraska Weed Control Association

“To encourage and develop better
weed control practices”

Noxious Weeds of Nebraska

Phone: 308-385-5097 Fax: 308-385-5121

www.neweed.org

New Invaders are Designated as Noxious Weeds

Nebraska adds an alliance of new invaders including **Japanese knotweed** and **Giant knotweed** and their hybrid **Bohemian knotweed** and all cultivars and hybrids. There are several Japanese cultivars developed for the ornamental market included in this designation since they can contribute to the Japanese knotweed invasion by providing pollen necessary for Japanese knotweed to produce viable seed.

Japanese



knotweed

leaves are spade shaped 4 to 7 inches long, Stems grow 5 to 8 feet tall and die back in the fall, are reddish through the winter (a good time to spot it)

Giant knotweed grows 8 to 12 feet tall, branches sparingly, leaves

are thin heart shaped, 6 to 12 inches long and two-thirds as wide.



Bohemian knotweed grows 7 to 15 feet tall, zig zag stems, leaves are heart shaped with the size between 5 to 9 inches long.



Cultivars being sold in Nebraska include:

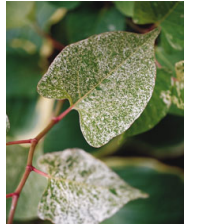
Pink Fleece Flower (*Fallopia Japonica* 'Reynoutria') Vigorous ground cover.



Red veined leaves; showy clusters of red buds open to pale pink.

Variegated Fleece Flower, (*Fallopia Japonica*, *Variegata*) Three feet tall with coral-pink flushed leaves have

splashes of white variegation, red stems and bottle-brush spikes of white flowers.



Other cultivars include Compacta, Crimson Beauty, Devon Cream, Milk Boy and others.



Control of Noxious Weeds is Required

Other Noxious Weeds

Musk Thistle (*Carduus nutans L.*)

Life Span: Biennial or occasionally and annual. Rosette formed first year.

Stems: Up to 6 feet tall; main stem and major branches are hairless. The stem bearing flower head is covered with fine gray hair with the first few inches below the flower head having no leaves attached. **Leaves:** Dark Green, prominent light green midrib, usually smooth or hairless on both sides. Deeply lobed with spiny margins up to



20 inches in length. **Inflorescence:** Large, solitary 1 to 2-1/2 inches in diameter, usually nodding slightly. Deep rose or purple color. Average plant produces 5,000 to 10,000 seeds; some up to 20,000 seeds.

Canada Thistle (*Cirsium arvense (L.) Scop.*)

Life Span: Perennial **Stems:** 2 to 4 feet: hollow; erect; branched above; no



leafy wings or spiny margins on upper stems below flowers. **Leaves:** Moderate to coarsely lobed, usually wavy with spiny margins. Upper side light to dark green, shiny, hairy, to hairless.

Inflorescence: Small 1/2 to 3/4 inch diameter rose-purple, sometimes white color, male/female flower on separate plants.

Roots: Extensive vertical and horizontal root system.

Leafy Spurge (*Euphorbia esula L.*)

Life Span: Perennial **Stems:** 1 to 3 feet tall; thickly clustered; erect; branched at the top; milky white sap. **Leaves:** Long and narrow. 1/4 inches wide and 1 to 4 inches long.

Inflorescence: Flower very small, surrounded by showy yellow-green heart-shaped bracts. **Roots:** Deep, spreading, brown with numerous pink buds which may produce new shoots or roots.



Plumeless Thistle (*Carduus acanthoides L.*)



Life Span: Biennial or occasionally an annual. Rosette formed in first year. **Stems:** 1 to 4 feet tall, leafy to the base of flower heads.

Leaves: Dark green with light midrib. Leaf surface sparsely hairy on top and hairy beneath. Leaves deeply lobed, with narrow spiny margins. **Inflorescence:** Solitary in cluster of two to five, blooms 1/2 to 1 inch in diameter, erect and usually not drooping. **Roots:** Stout, fleshy, taproot.

Diffuse Knapweed (*Centaurea diffusa Lam.*)

Life Span: Biennial or short-lived perennial. Rosette formed during the first year. **Stems:** Erect, much branched with rough pubescence. Height 1 to 2 1/2 feet tall. Often branched near of directly above the base. **Leaves:** Alternate, deeply divided into narrow segments. Short, or no, leaf stalks. Upper leaves nearly entire or minutely lobed. Gray-green color and covered



with fine hair. **Inflorescence:** Numerous solitary heads clustered at end of branches, approximately 3/4 inch in diameter. White, pink, or lavender disk flowers. Flowers July through September. **Roots:** Stout, elongated taproot.

Spotted Knapweed (*Centaurea Maculosa Lam.*)

Life Span: Biennial or short-lived perennial. Rosette formed during the first year. **Stems:** Slender erect with numerous wiry branches. Height 1 to 3 feet tall. Roughly hairy. **Leaves:** Alternate, deeply divided into narrow segments and covered with short hairs. Leaves much smaller at top of plant and becoming more linear. Seedling leaves form rosette. **Inflorescence:** Numerous terminal and axillary blossoms 3/4 inch in diameter, com-



posed of pink to purple disk flowers. Each head surrounded by leaf-like bract with dark tips and a fringe of bristly hairs. Flowers June through October. **Roots:** Stout, elongated taproot.

Saltcedar (*tamarix, tamarisk*)

Life Span: Perennial. **Twigs:** 3 to 20 feet tall. Upright or spreading, forming thickets; bark smooth and glabrous becoming ridged and furrowed with age. **Leaves:** Alternate, imbricate: blades lanceolate to ovate-lanceolate, tips pointed, margins membraneous, bluish-green to grayish-green **Inflorescence:** Raceme, numerous in panicles, flowers many; bract triangular to narrowly trullate (longer than the pedicels), tips pointed, margins denticulate. **Roots:** Taproot, deep, extensive.



Phragmites (Common Reed)

Life Span: Perennial **Stems:** 3 to 20 feet tall **Sheath:** open, smooth, margins with fine hairs. **Blade:** Flat, tapering to long-attenuate tips; margins serrate, w/o hair; upper surface ridge-veined, lower surface without hair or sparsely

(Identification between native and non-native phragmites can be difficult)

hairy **Inflorescence:** Panicle, plume-like, much branches, branches and top nodding at maturity, densely flowered, tawny to purplish **Roots:** Rhizomes, stolons.

Purple Loosestrife (*purple lythrum, spiked loosestrife*)

Life Span: Perennial. **Stems:** 1 to 8 ft tall. Erect 4-angled, hairless to pubescent, not highly branched, usually from a woody base.

Leaves: Opposite or in whorls: blades simple, lanceolate, tip sharply pointed, base rounded or heart-shaped, margins entire, surfaces pubescent; sessile. **Inflorescence:** Cymes arranged in spikes, terminal. **Roots:** Rhizomes, short; taproot.

