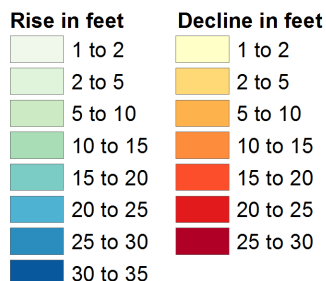
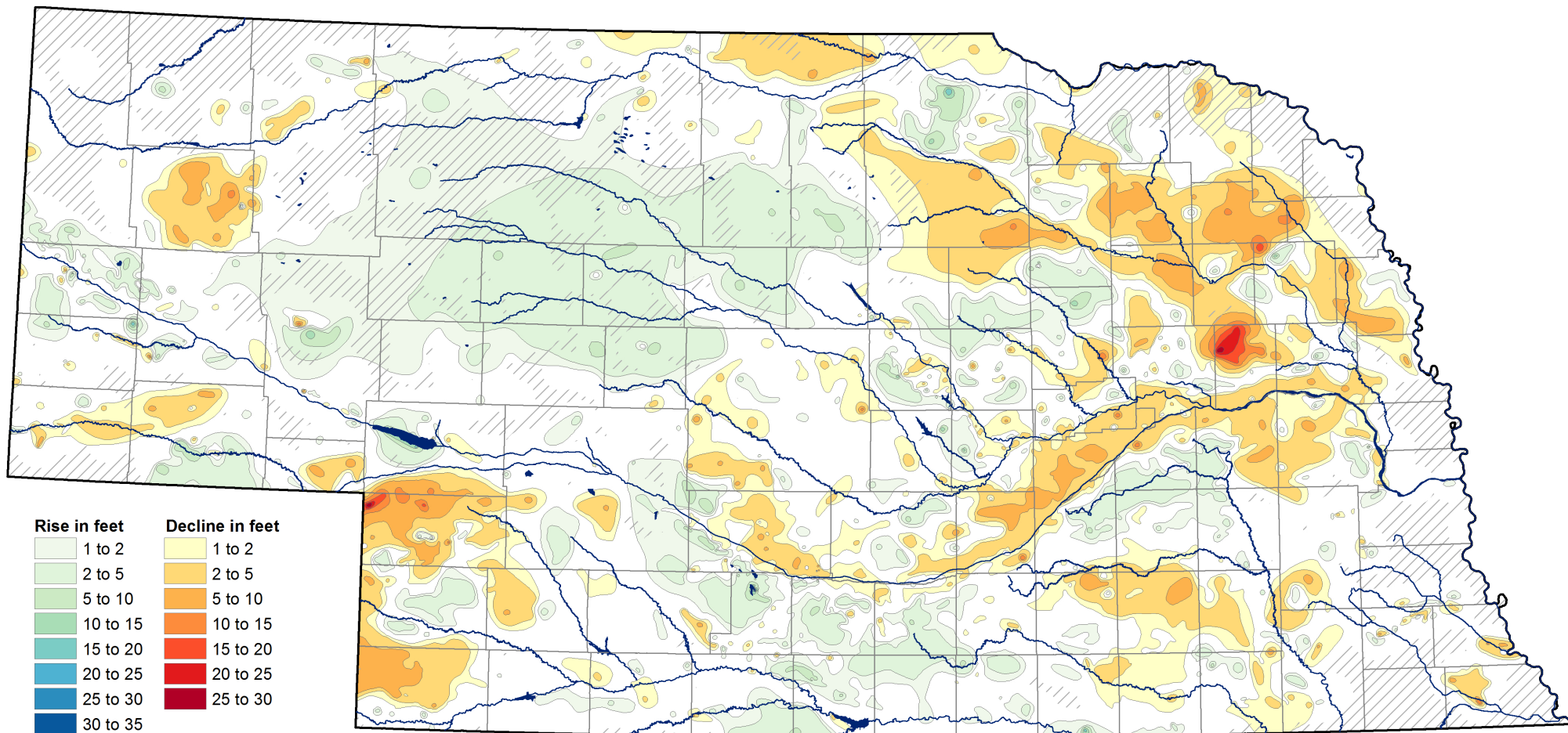


Groundwater-level Changes in Nebraska - Spring 2008 to Spring 2013



< +/- 1 foot

Sparse data

Surface water

(1 foot = .3048 meters)

CONSERVATION AND SURVEY DIVISION (<http://snr.unl.edu/csd>)
 School of Natural Resources (<http://snr.unl.edu>)
 Institute of Agriculture and Natural Resources
 University of Nebraska-Lincoln

Aaron Young, Water Resources Coordinator, CSD
 Mark Burbach, Water Levels Program Supervisor, CSD
 Les Howard, GIS Manager, CSD

U.S. Geological Survey
 Nebraska Water Science Center

U.S. Bureau of Reclamation
 Kansas-Nebraska Area Office

Nebraska Natural Resources Districts

Central Nebraska Public Power and Irrigation District

N School of Natural Resources
IANR Institute of Agriculture and Natural Resources
 University of Nebraska-Lincoln

The University of Nebraska-Lincoln does not discriminate based on gender, age, disability, race, color, religion, marital status, veteran's status, national or ethnic origin, or sexual orientation.

December 2013