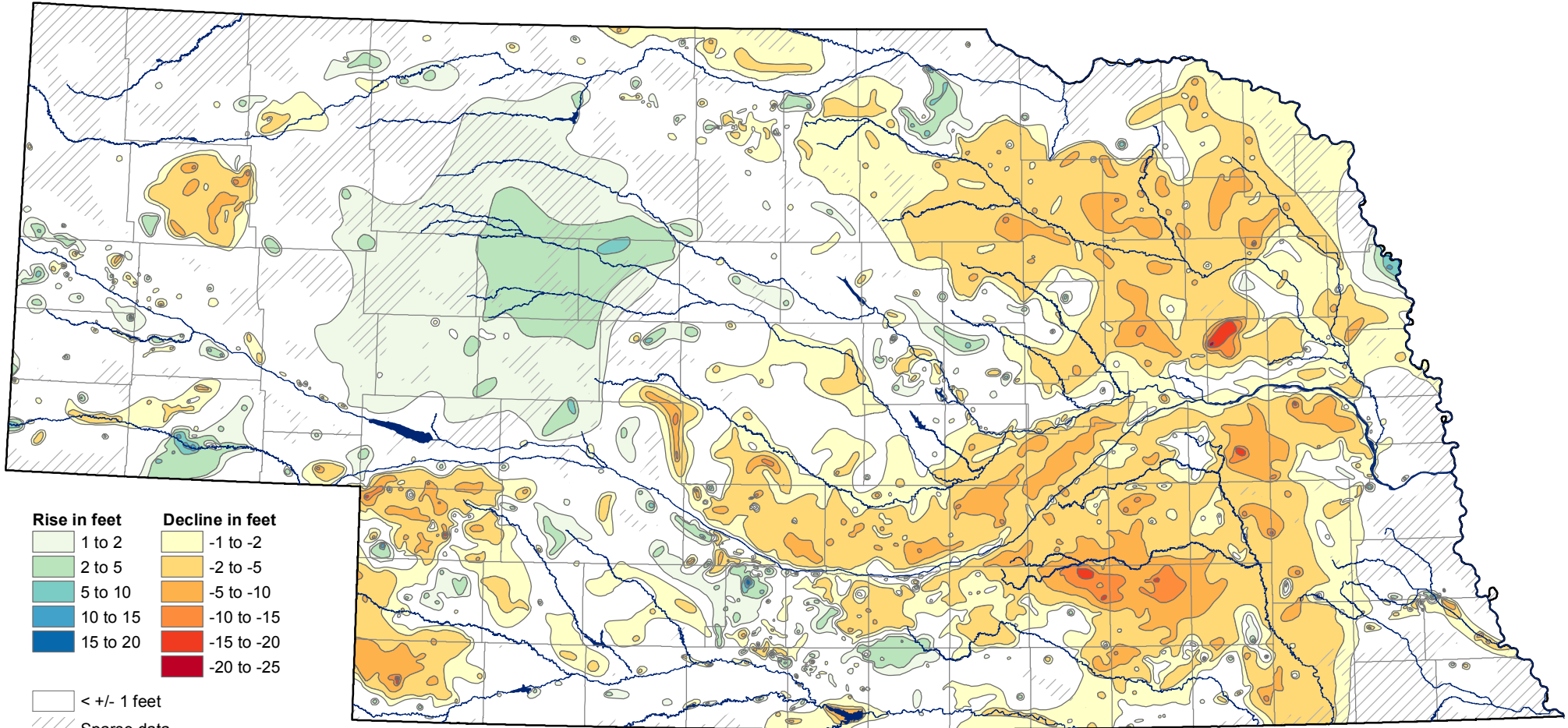


Groundwater-level Changes in Nebraska - Spring 2009 to Spring 2014



Rise in feet	Decline in feet
1 to 2	-1 to -2
2 to 5	-2 to -5
5 to 10	-5 to -10
10 to 15	-10 to -15
15 to 20	-15 to -20
	-20 to -25

- < +/- 1 feet
- Sparse data
- Surface water

(1 foot = .3048 meters)

CONSERVATION AND SURVEY DIVISION (<http://snr.unl.edu/csd>)
 School of Natural Resources (<http://snr.unl.edu>)
 Institute of Agriculture and Natural Resources
 University of Nebraska-Lincoln

Aaron Young, Survey Geologist, CSD
 Mark Burbach, Water Levels Program Supervisor, CSD
 Les Howard, GIS Manager, CSD

U.S. Geological Survey
 Nebraska Water Science Center

U.S. Bureau of Reclamation
 Kansas-Nebraska Area Office

Nebraska Natural Resources Districts

Central Nebraska Public Power and Irrigation District

School of Natural Resources
 Institute of Agriculture and Natural Resources
 IANR University of Nebraska-Lincoln

The University of Nebraska-Lincoln does not discriminate based on gender, age, disability, race, color, religion, marital status, veteran's status, national or ethnic origin, or sexual orientation.