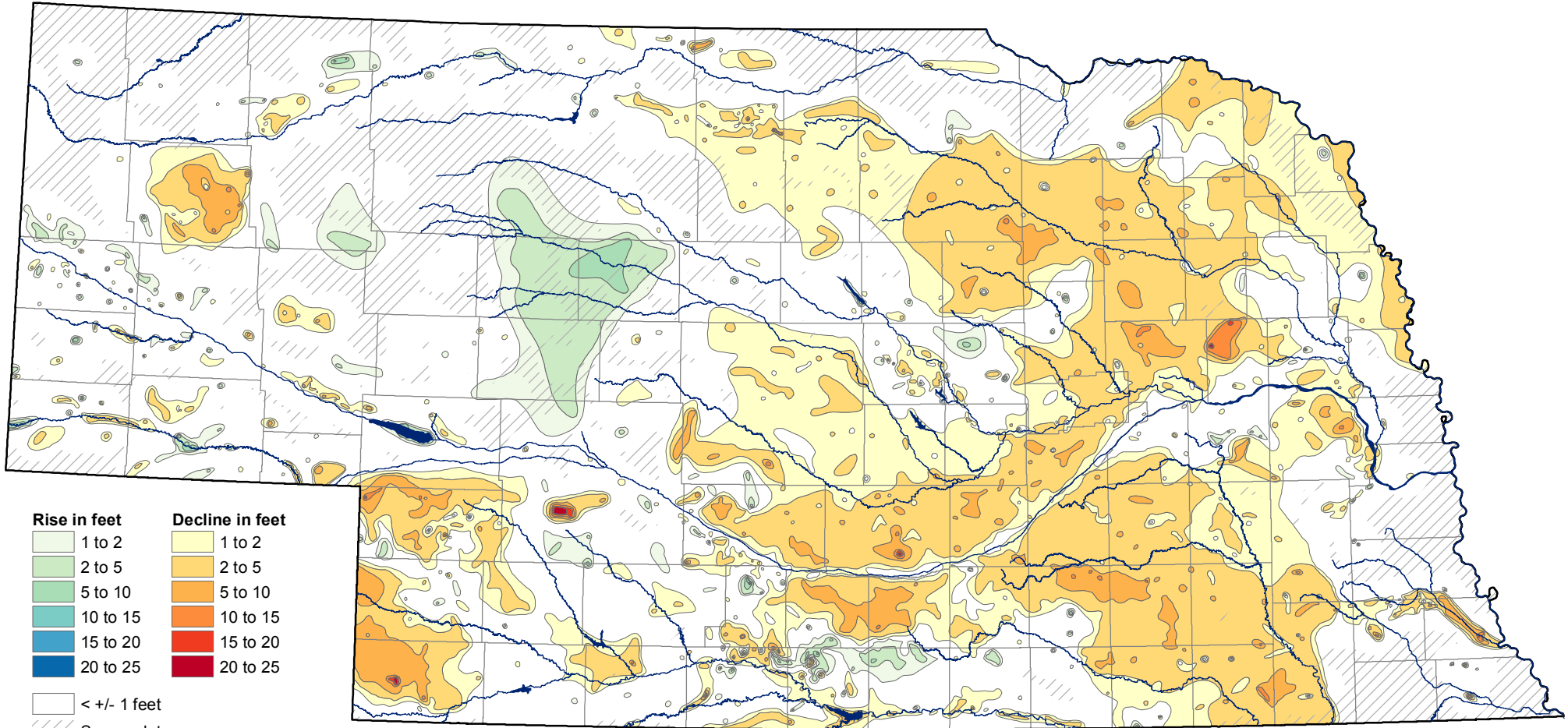


Groundwater-Level Changes in Nebraska - Spring 2010 to Spring 2015



Rise in feet	Decline in feet
1 to 2	1 to 2
2 to 5	2 to 5
5 to 10	5 to 10
10 to 15	10 to 15
15 to 20	15 to 20
20 to 25	20 to 25
< +/- 1 feet	
Sparse data	
Surface water	

(1 foot = .3048 meters)

CONSERVATION AND SURVEY DIVISION (<http://snr.unl.edu/csd>)
 School of Natural Resources (<http://snr.unl.edu>)
 Institute of Agriculture and Natural Resources
 University of Nebraska-Lincoln

Aaron Young, Survey Geologist, CSD
 Mark Burbach, Water Levels Program Supervisor, CSD
 Les Howard, GIS Manager, CSD

U.S. Geological Survey
 Nebraska Water Science Center

U.S. Bureau of Reclamation
 Kansas-Nebraska Area Office

Nebraska Natural Resources Districts

Central Nebraska Public Power and Irrigation District

N School of Natural Resources
IANR Institute of Agriculture and Natural Resources
 University of Nebraska-Lincoln

The University of Nebraska-Lincoln does not discriminate based on gender, age, disability, race, color, religion, marital status, veteran's status, national or ethnic origin, or sexual orientation.

December 2015