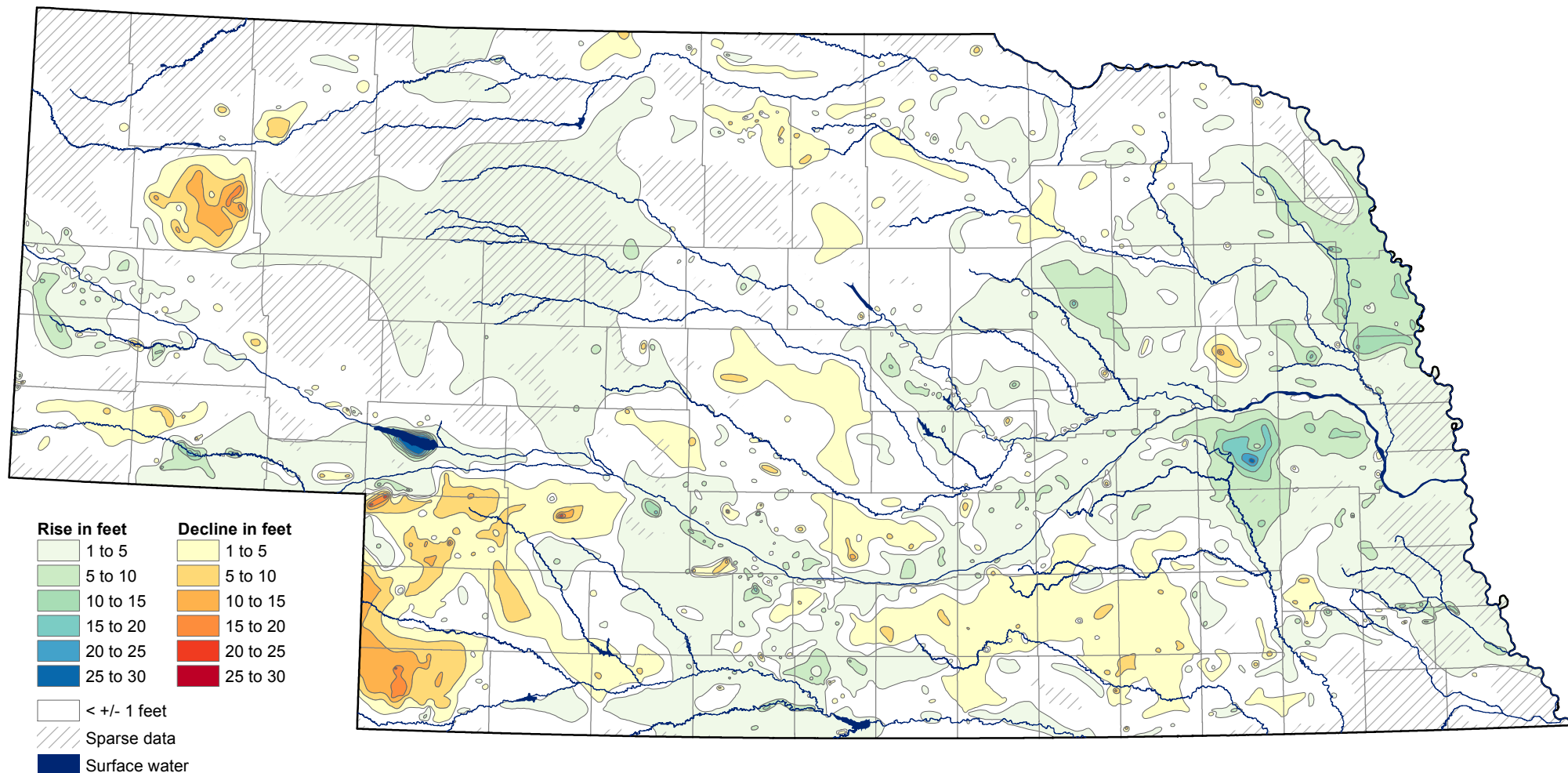


Groundwater-Level Changes in Nebraska - Spring 2006 to Spring 2016



(1 foot = .3048 meters)

For an explanation of information presented on this map, see the 2016 Nebraska Statewide Groundwater-Level Monitoring Report, available for download at go.unl.edu/groundwater

CONSERVATION AND SURVEY DIVISION (<http://snr.unl.edu/csd>)
 School of Natural Resources (<http://snr.unl.edu>)
 Institute of Agriculture and Natural Resources
 University of Nebraska-Lincoln

Aaron Young, Survey Geologist, CSD
 Mark Burbach, Water Levels Program Supervisor, CSD
 Les Howard, GIS Manager, CSD
 Michele Waszgis, Research Technician, CSD

U.S. Geological Survey
 Nebraska Water Science Center

U.S. Bureau of Reclamation
 Kansas-Nebraska Area Office

Nebraska Natural Resources Districts

Central Nebraska Public Power and
 Irrigation District