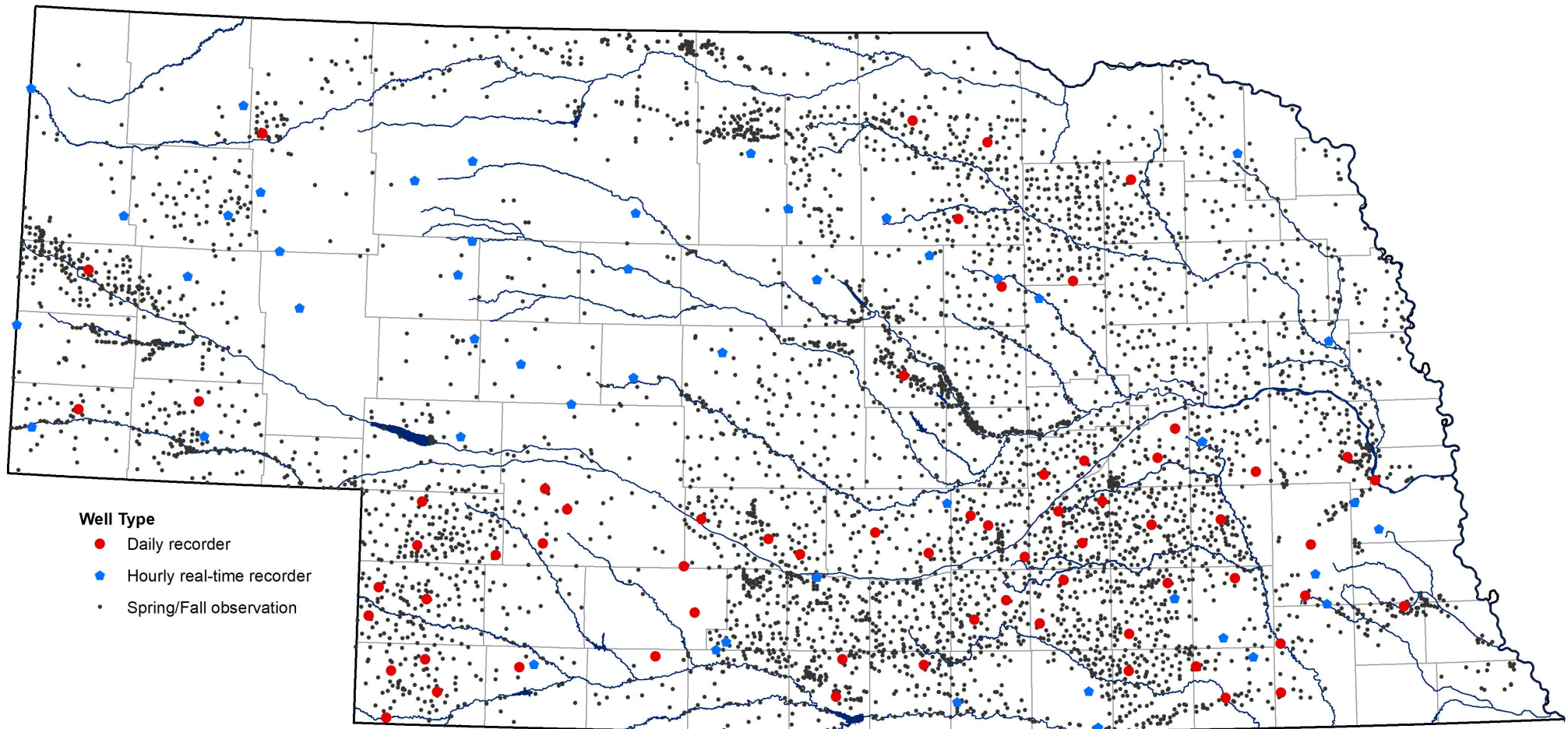


Location of Observation Wells by Type



For an explanation of information presented on this map, see the 2019 Nebraska Statewide Groundwater-Level Monitoring Report, available for download at go.unl.edu/groundwater

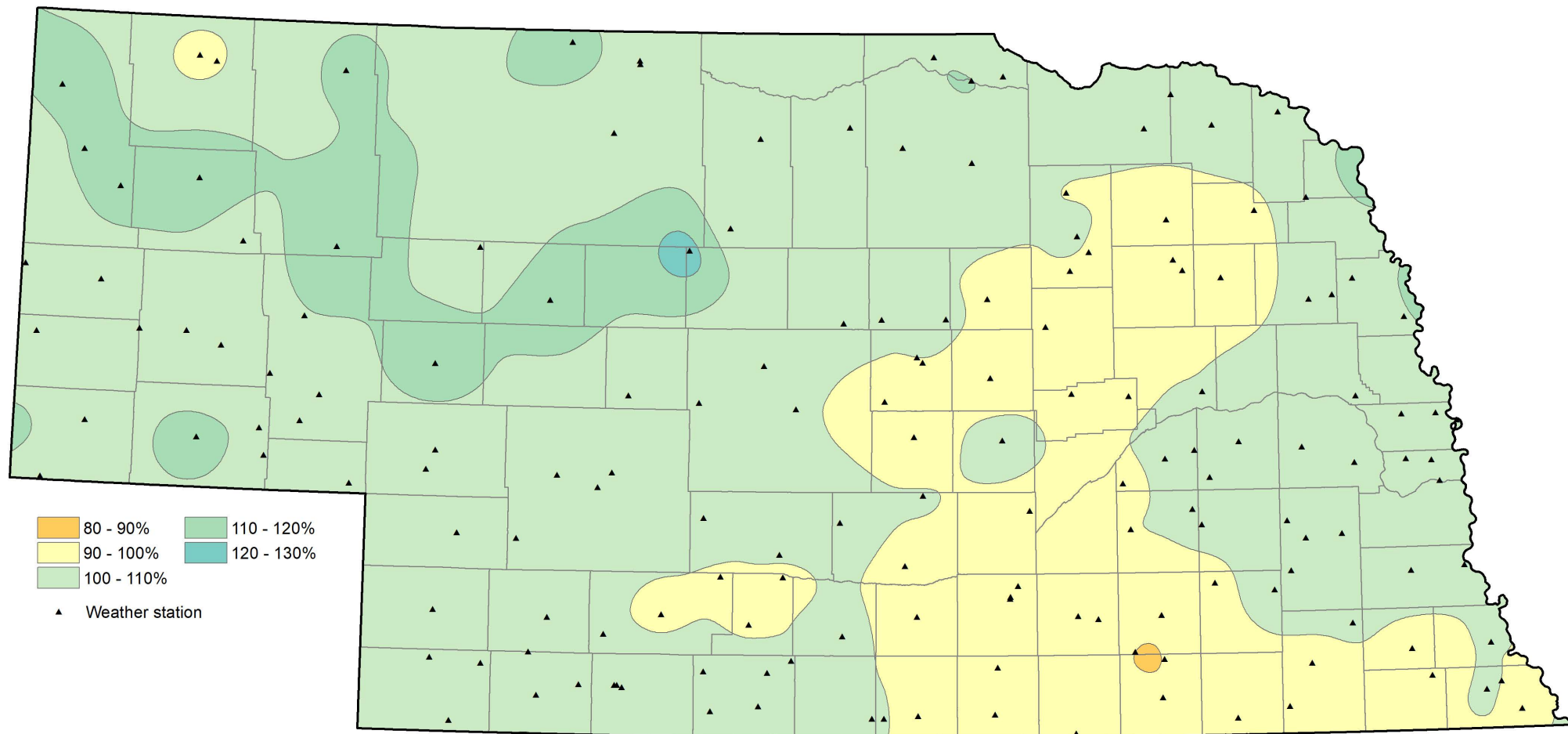
CONSERVATION AND SURVEY DIVISION (<http://snr.unl.edu/csd>)
 School of Natural Resources (<http://snr.unl.edu>)
 Institute of Agriculture and Natural Resources
 University of Nebraska-Lincoln

Aaron Young, Survey Geologist, CSD
 Mark Burbach, Water Levels Program Supervisor, CSD
 Les Howard, GIS Manager, CSD

Data provided by:

Nebraska Natural Resources Districts
 Central Nebraska Public Power and Irrigation District
 U.S. Geological Survey
 Nebraska Water Science Center
 U.S. Bureau of Reclamation
 Kansas-Nebraska Area Office
 Conservation and Survey Division,
 University of Nebraska - Lincoln

Percent of Normal Precipitation - January 2009 to January 2019



For an explanation of information presented on this map, see the 2019 Nebraska Statewide Groundwater-Level Monitoring Report, available for download at go.unl.edu/groundwater

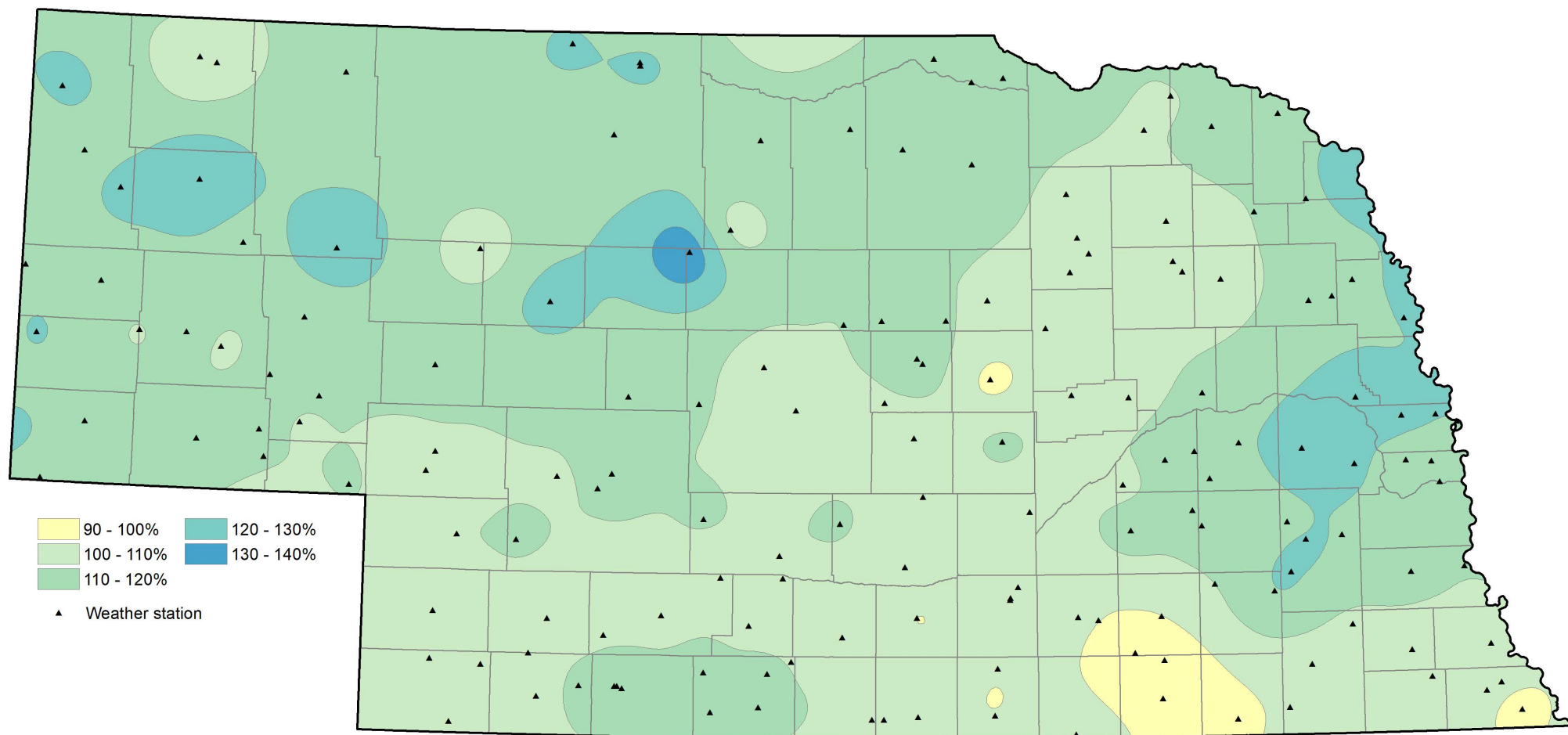
CONSERVATION AND SURVEY DIVISION (<http://snr.unl.edu/csd>)
 School of Natural Resources (<http://snr.unl.edu>)
 Institute of Agriculture and Natural Resources
 University of Nebraska-Lincoln

National Climate Data Center
 Asheville, North Carolina

High Plains Regional Climate Center
 University of Nebraska - Lincoln

Aaron Young, Survey Geologist, CSD
 Mark Burbach, Water Levels Program Supervisor, CSD
 Les Howard, GIS Manager, CSD

Percent of Normal Precipitation - January 2014 to January 2019



For an explanation of information presented on this map, see the 2019 Nebraska Statewide Groundwater-Level Monitoring Report, available for download at go.unl.edu/groundwater

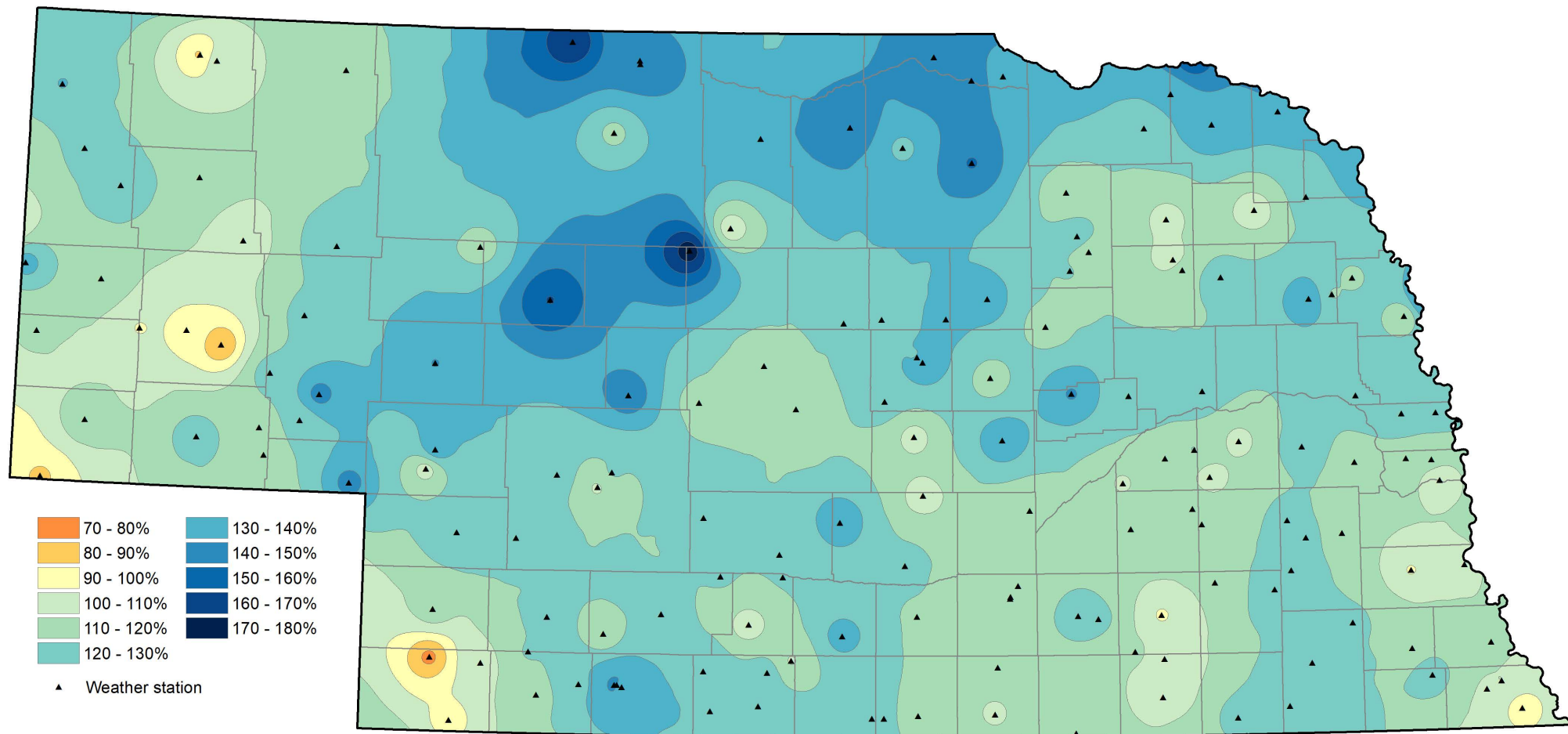
CONSERVATION AND SURVEY DIVISION (<http://snr.unl.edu/csd>)
 School of Natural Resources (<http://snr.unl.edu>)
 Institute of Agriculture and Natural Resources
 University of Nebraska-Lincoln

Aaron Young, Survey Geologist, CSD
 Mark Burbach, Water Levels Program Supervisor, CSD
 Les Howard, GIS Manager, CSD

National Climate Data Center
 Asheville, North Carolina

High Plains Regional Climate Center
 University of Nebraska - Lincoln

Percent of Normal Precipitation - January 2018 to January 2019



For an explanation of information presented on this map, see the 2019 Nebraska Statewide Groundwater-Level Monitoring Report, available for download at go.unl.edu/groundwater

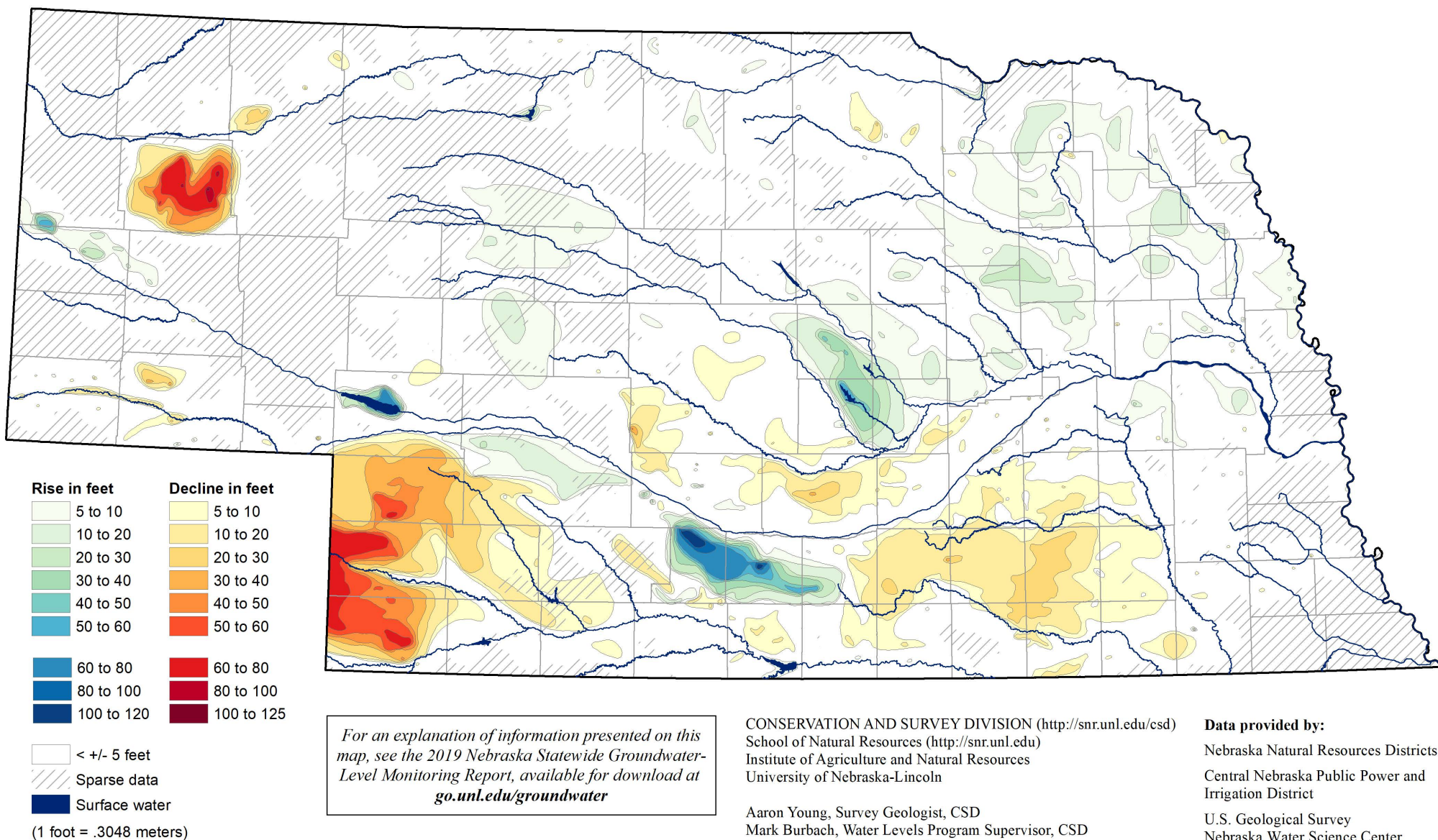
CONSERVATION AND SURVEY DIVISION (<http://snr.unl.edu/csd>)
School of Natural Resources (<http://snr.unl.edu>)
Institute of Agriculture and Natural Resources
University of Nebraska-Lincoln

National Climate Data Center
Asheville, North Carolina

High Plains Regional Climate Center
University of Nebraska - Lincoln

Aaron Young, Survey Geologist, CSD
Mark Burbach, Water Levels Program Supervisor, CSD
Les Howard, GIS Manager, CSD

Groundwater-Level Changes in Nebraska - Predevelopment to Spring 2019



For an explanation of information presented on this map, see the 2019 Nebraska Statewide Groundwater-Level Monitoring Report, available for download at go.unl.edu/groundwater

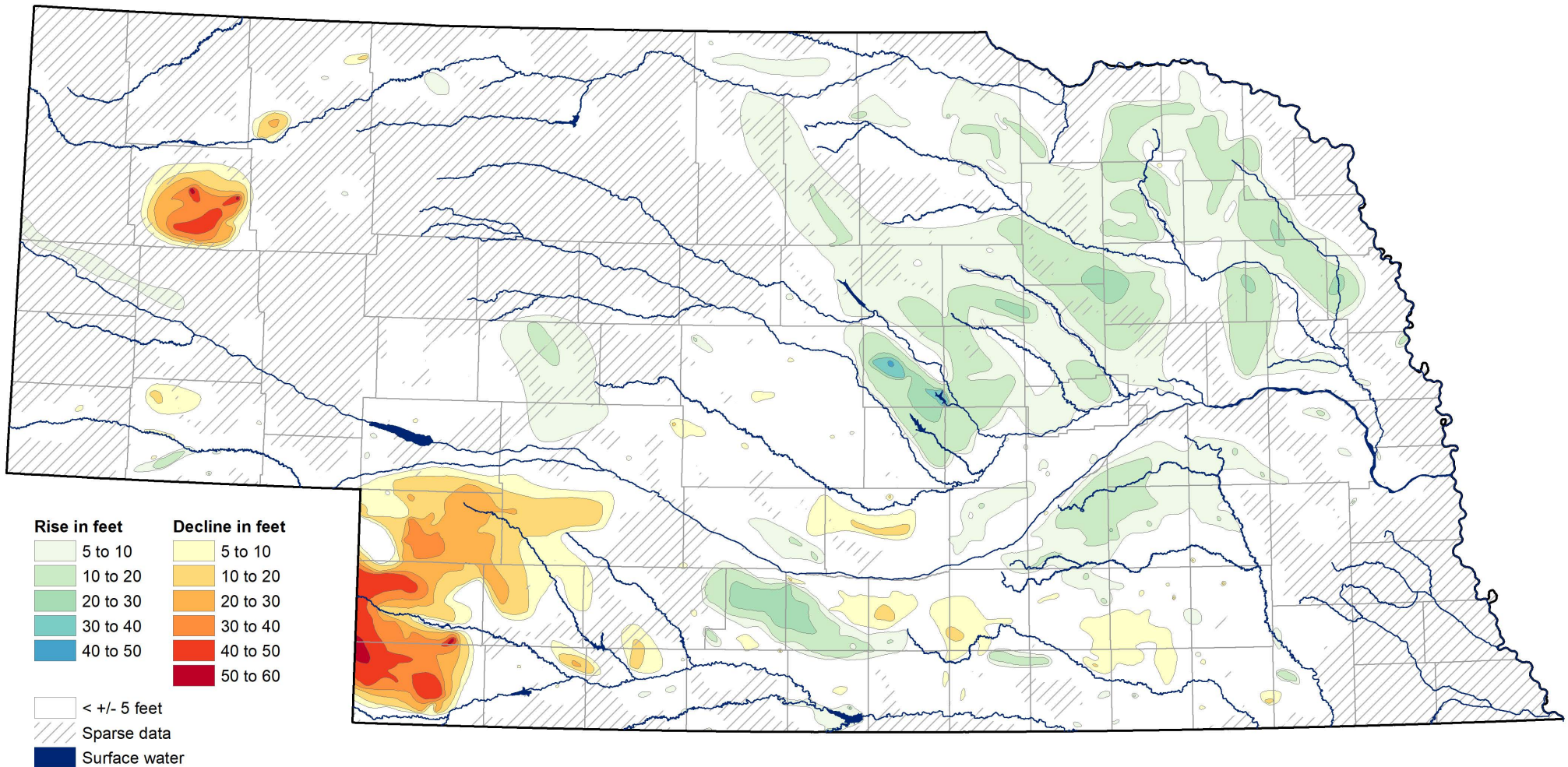
CONSERVATION AND SURVEY DIVISION (<http://snr.unl.edu/csd>)
 School of Natural Resources (<http://snr.unl.edu>)
 Institute of Agriculture and Natural Resources
 University of Nebraska-Lincoln

Aaron Young, Survey Geologist, CSD
 Mark Burbach, Water Levels Program Supervisor, CSD
 Les Howard, GIS Manager, CSD

Data provided by:
 Nebraska Natural Resources Districts
 Central Nebraska Public Power and Irrigation District
 U.S. Geological Survey
 Nebraska Water Science Center
 U.S. Bureau of Reclamation
 Kansas-Nebraska Area Office
 Conservation and Survey Division,
 University of Nebraska - Lincoln

March 2020

Groundwater-Level Changes in Nebraska - Spring 1981 to Spring 2019



For an explanation of information presented on this map, see the 2019 Nebraska Statewide Groundwater-Level Monitoring Report, available for download at go.unl.edu/groundwater

CONSERVATION AND SURVEY DIVISION (<http://snr.unl.edu/csd>)
 School of Natural Resources (<http://snr.unl.edu>)
 Institute of Agriculture and Natural Resources
 University of Nebraska-Lincoln

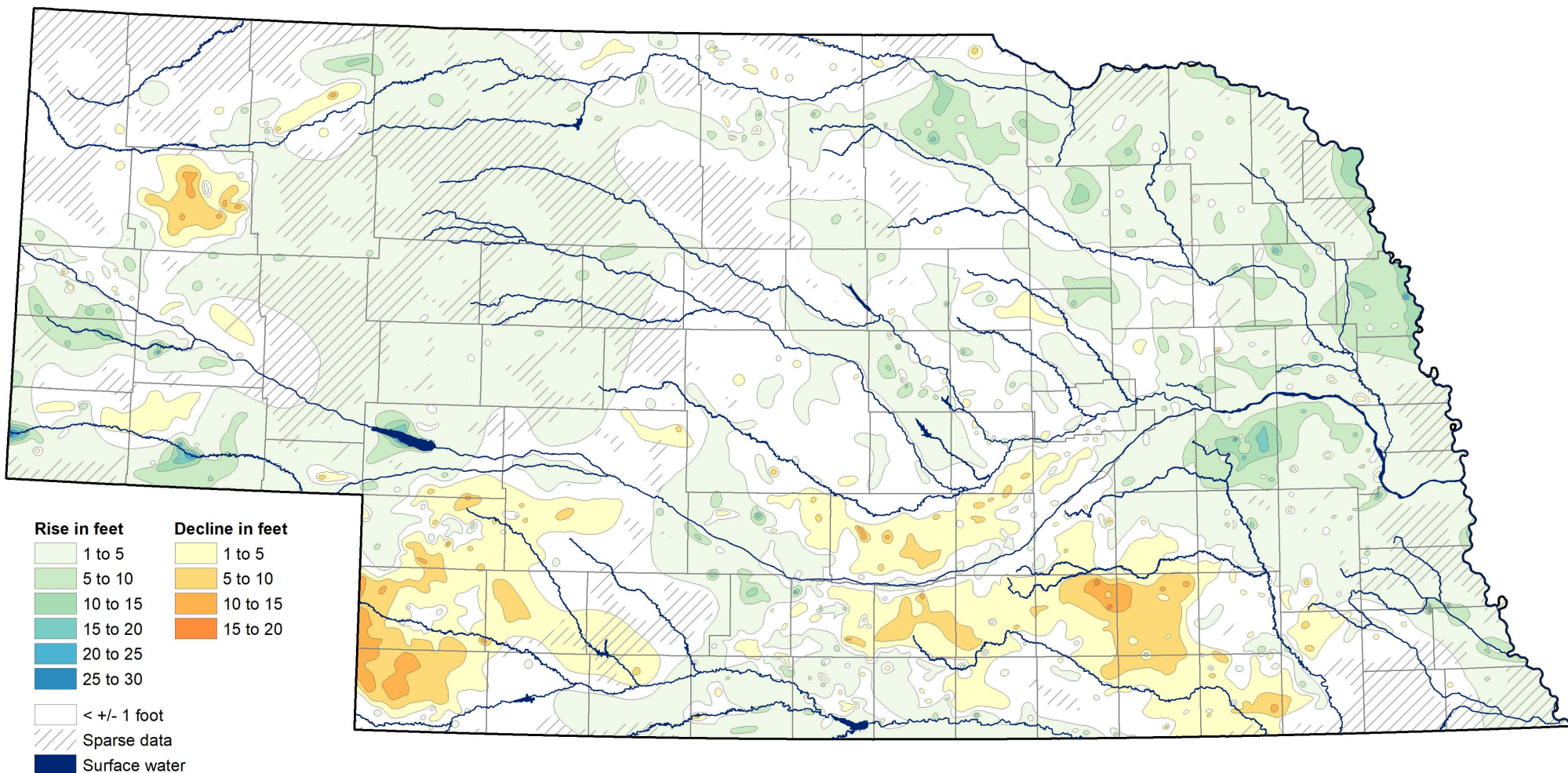
Aaron Young, Survey Geologist, CSD
 Mark Burbach, Water Levels Program Supervisor, CSD
 Les Howard, GIS Manager, CSD

Data provided by:

Nebraska Natural Resources Districts
 Central Nebraska Public Power and Irrigation District
 U.S. Geological Survey
 Nebraska Water Science Center
 U.S. Bureau of Reclamation
 Kansas-Nebraska Area Office
 Conservation and Survey Division,
 University of Nebraska - Lincoln

March 2020

Groundwater-Level Changes in Nebraska - Spring 2009 to Spring 2019



For an explanation of information presented on this map, see the 2019 Nebraska Statewide Groundwater-Level Monitoring Report, available for download at go.unl.edu/groundwater

CONSERVATION AND SURVEY DIVISION (<http://snr.unl.edu/csd>)
 School of Natural Resources (<http://snr.unl.edu>)
 Institute of Agriculture and Natural Resources
 University of Nebraska-Lincoln

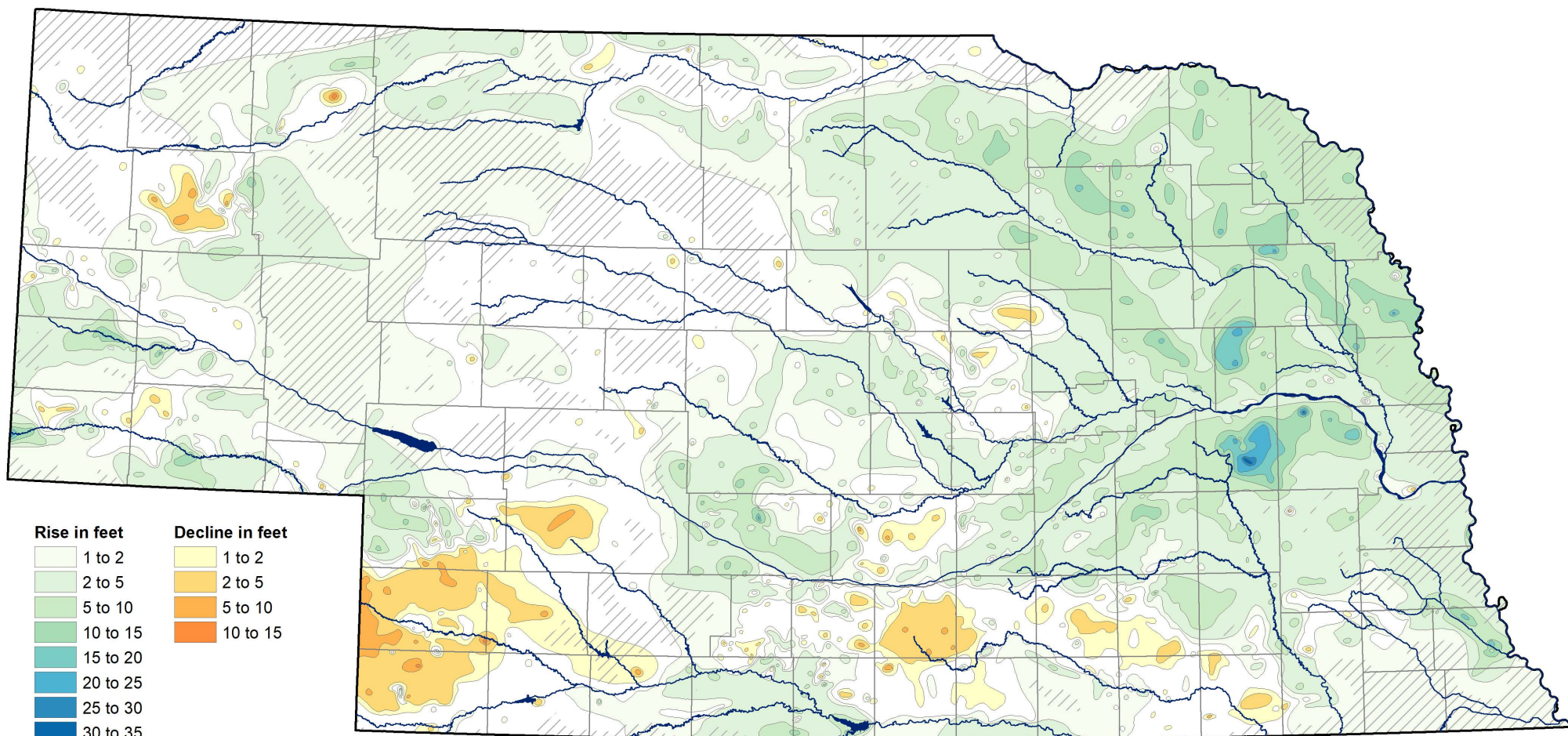
Aaron Young, Survey Geologist, CSD
 Mark Burbach, Water Levels Program Supervisor, CSD
 Les Howard, GIS Manager, CSD

Data provided by:

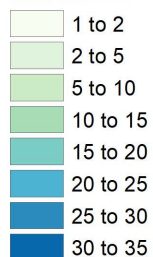
Nebraska Natural Resources Districts
 Central Nebraska Public Power and Irrigation District
 U.S. Geological Survey
 Nebraska Water Science Center
 U.S. Bureau of Reclamation
 Kansas-Nebraska Area Office
 Conservation and Survey Division,
 University of Nebraska - Lincoln

March 2020

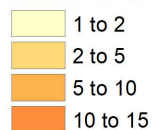
Groundwater-Level Changes in Nebraska - Spring 2014 to Spring 2019



Rise in feet



Decline in feet



< +/- 1 foot

Sparse data

Surface water

(1 foot = .3048 meters)

For an explanation of information presented on this map, see the 2019 Nebraska Statewide Groundwater-Level Monitoring Report, available for download at go.unl.edu/groundwater

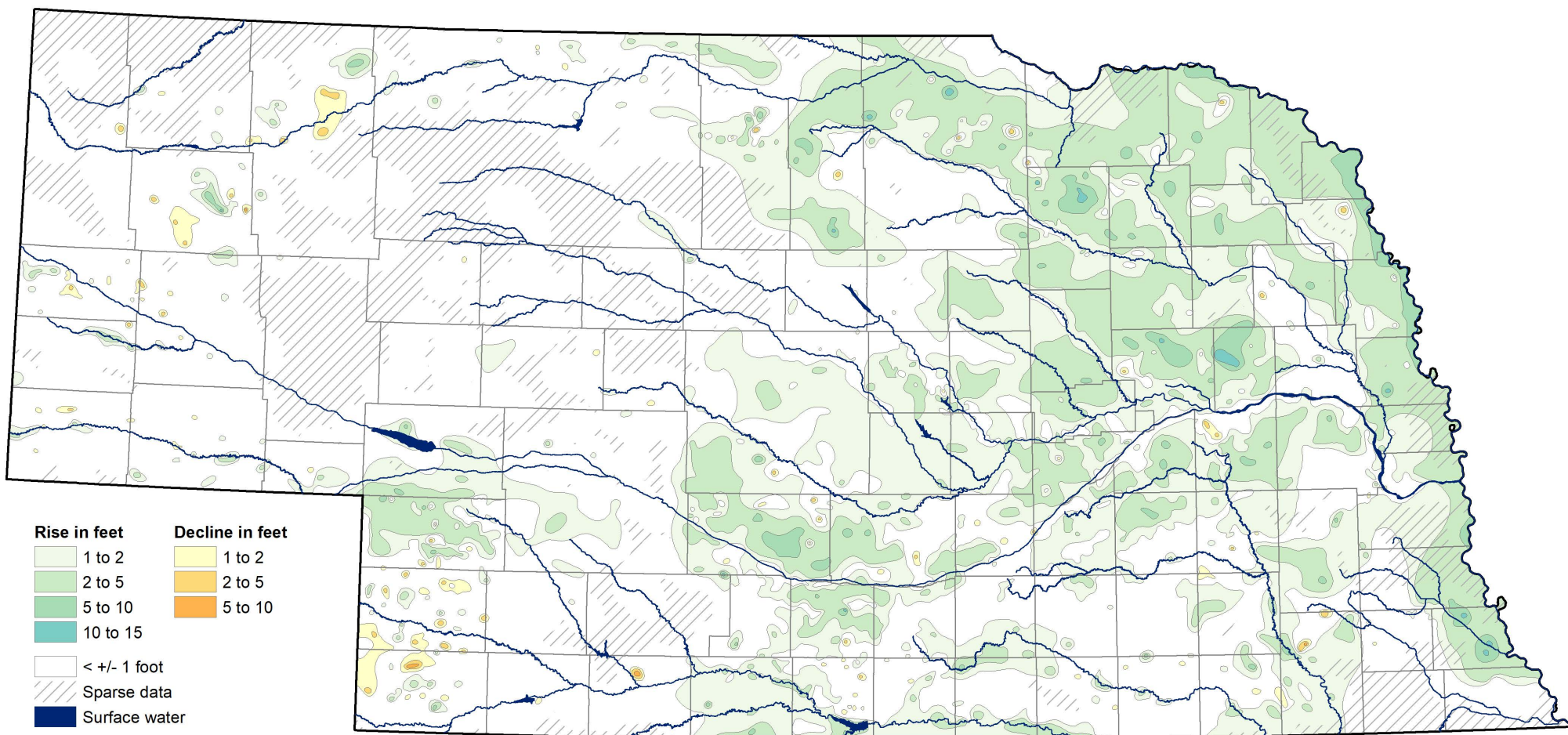
CONSERVATION AND SURVEY DIVISION (<http://snr.unl.edu/csd>)
School of Natural Resources (<http://snr.unl.edu>)
Institute of Agriculture and Natural Resources
University of Nebraska-Lincoln

Aaron Young, Survey Geologist, CSD
Mark Burbach, Water Levels Program Supervisor, CSD
Les Howard, GIS Manager, CSD

Data provided by:

Nebraska Natural Resources Districts
Central Nebraska Public Power and Irrigation District
U.S. Geological Survey
Nebraska Water Science Center
U.S. Bureau of Reclamation
Kansas-Nebraska Area Office
Conservation and Survey Division,
University of Nebraska - Lincoln

Groundwater-Level Changes in Nebraska - Spring 2018 to Spring 2019



(1 foot = .3048 meters)

For an explanation of information presented on this map, see the 2019 Nebraska Statewide Groundwater-Level Monitoring Report, available for download at go.unl.edu/groundwater

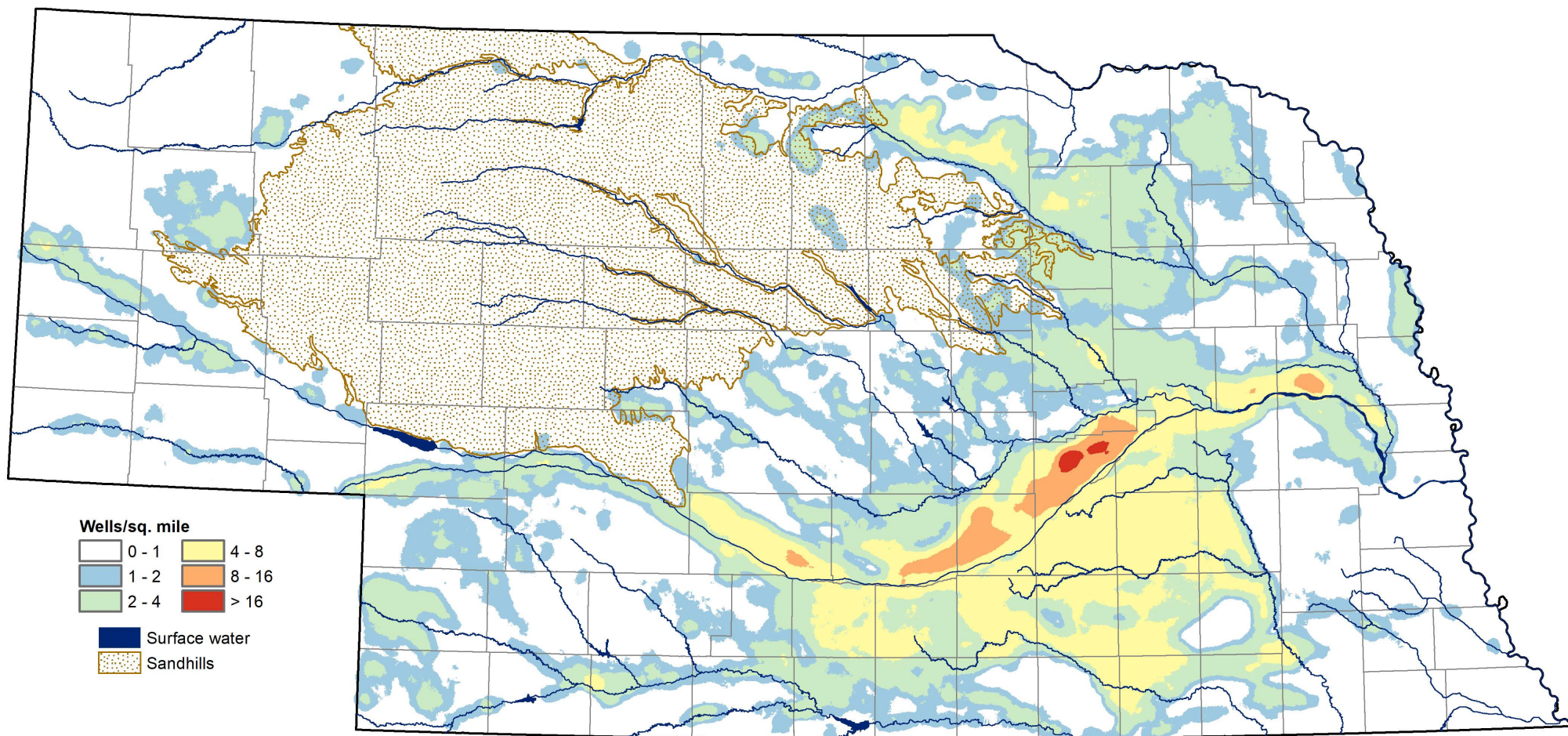
CONSERVATION AND SURVEY DIVISION (<http://snr.unl.edu/csd>)
 School of Natural Resources (<http://snr.unl.edu>)
 Institute of Agriculture and Natural Resources
 University of Nebraska-Lincoln

Aaron Young, Survey Geologist, CSD
 Mark Burbach, Water Levels Program Supervisor, CSD
 Les Howard, GIS Manager, CSD

Data provided by:

Nebraska Natural Resources Districts
 Central Nebraska Public Power and Irrigation District
 U.S. Geological Survey
 Nebraska Water Science Center
 U.S. Bureau of Reclamation
 Kansas-Nebraska Area Office
 Conservation and Survey Division,
 University of Nebraska - Lincoln

Density of Active Registered Irrigation Wells - December 2019



For an explanation of information presented on this map, see the 2019 Nebraska Statewide Groundwater-Level Monitoring Report, available for download at go.unl.edu/groundwater

CONSERVATION AND SURVEY DIVISION (<http://snr.unl.edu/csd>)
 School of Natural Resources (<http://snr.unl.edu>)
 Institute of Agriculture and Natural Resources
 University of Nebraska-Lincoln

Data source:
 Nebraska Department of
 Natural Resources

Aaron Young, Survey Geologist, CSD
 Mark Burbach, Water Levels Program Supervisor, CSD
 Les Howard, GIS Manager, CSD