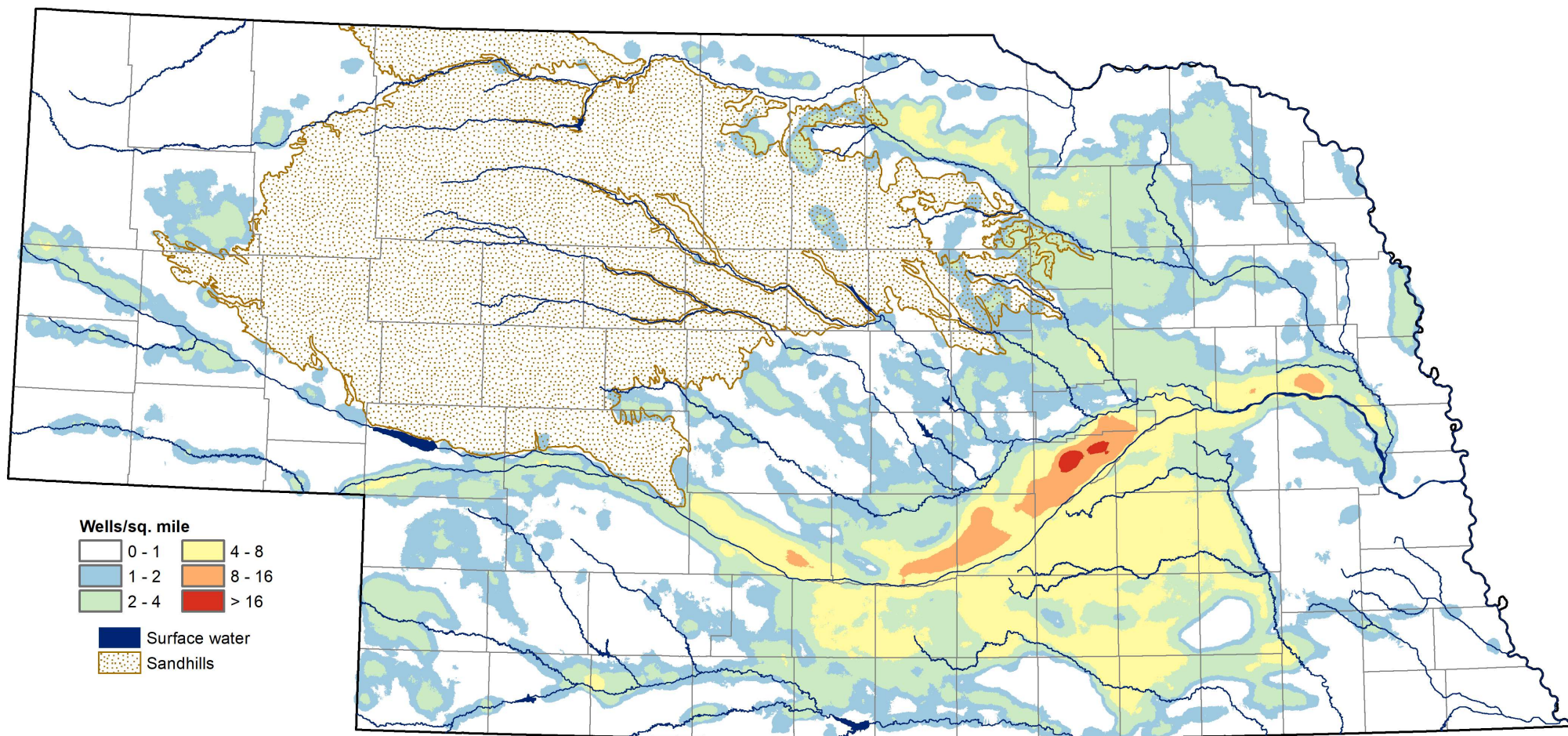


# Density of Active Registered Irrigation Wells - December 2019



*For an explanation of information presented on this map, see the 2019 Nebraska Statewide Groundwater-Level Monitoring Report, available for download at [go.unl.edu/groundwater](http://go.unl.edu/groundwater)*

CONSERVATION AND SURVEY DIVISION (<http://snr.unl.edu/csd>)  
 School of Natural Resources (<http://snr.unl.edu>)  
 Institute of Agriculture and Natural Resources  
 University of Nebraska-Lincoln

Data source:  
 Nebraska Department of  
 Natural Resources

Aaron Young, Survey Geologist, CSD  
 Mark Burbach, Water Levels Program Supervisor, CSD  
 Les Howard, GIS Manager, CSD