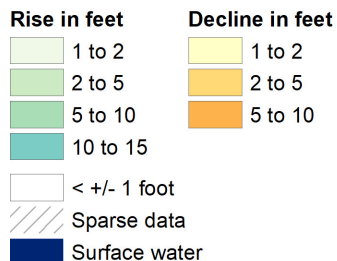
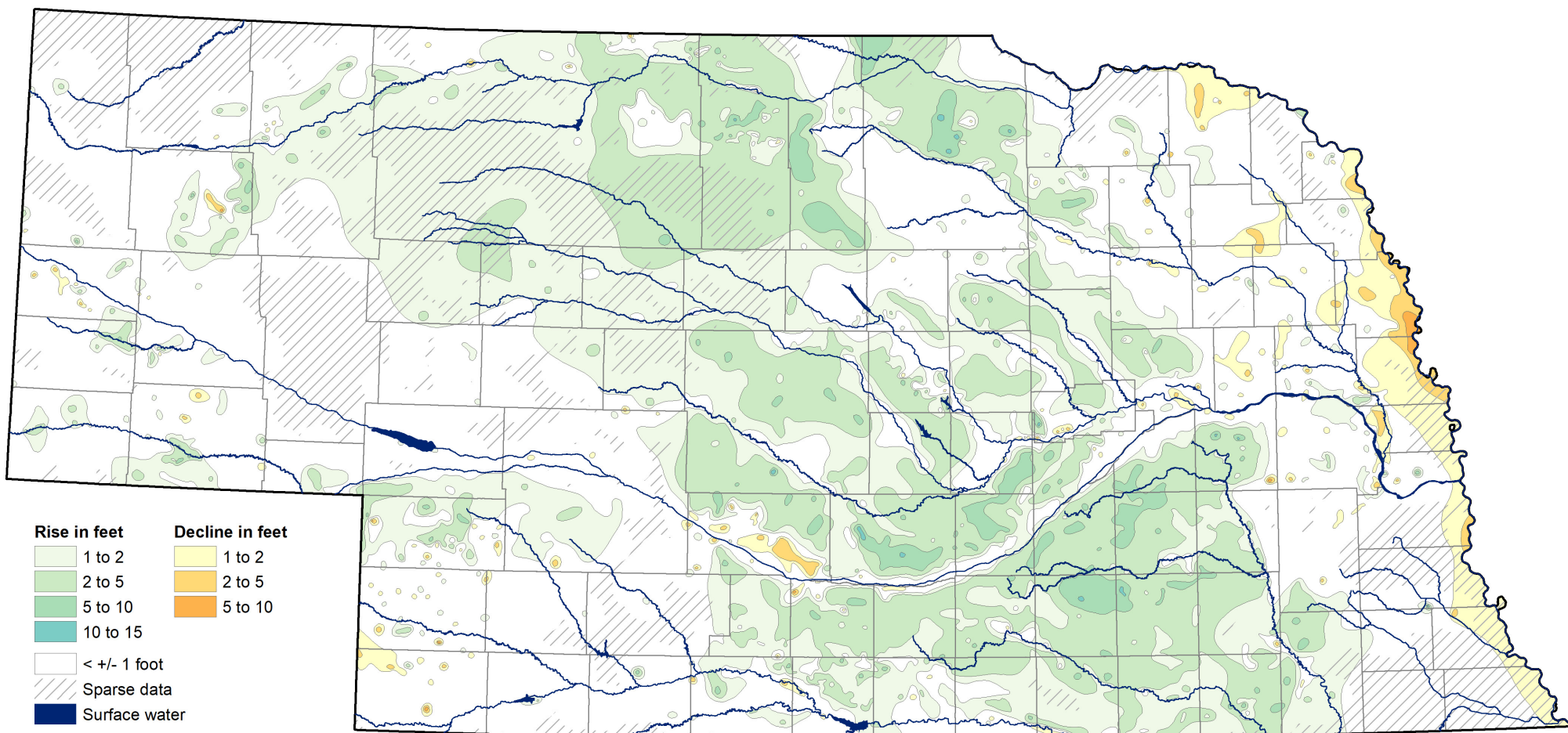


# Groundwater-Level Changes in Nebraska - Spring 2019 to Spring 2020



(1 foot = .3048 meters)

*For an explanation of information presented on this map, see the 2020 Nebraska Statewide Groundwater-Level Monitoring Report, available for download at [go.unl.edu/groundwater](http://go.unl.edu/groundwater)*

CONSERVATION AND SURVEY DIVISION (<http://snr.unl.edu/csd>)  
School of Natural Resources (<http://snr.unl.edu>)  
Institute of Agriculture and Natural Resources  
University of Nebraska-Lincoln

Aaron Young, Survey Geologist, CSD  
Mark Burbach, Water Levels Program Supervisor, CSD  
Les Howard, GIS Manager, CSD

## Data provided by:

Nebraska Natural Resources Districts  
Central Nebraska Public Power and Irrigation District  
U.S. Geological Survey  
Nebraska Water Science Center  
U.S. Bureau of Reclamation  
Kansas-Nebraska Area Office  
Conservation and Survey Division,  
University of Nebraska - Lincoln