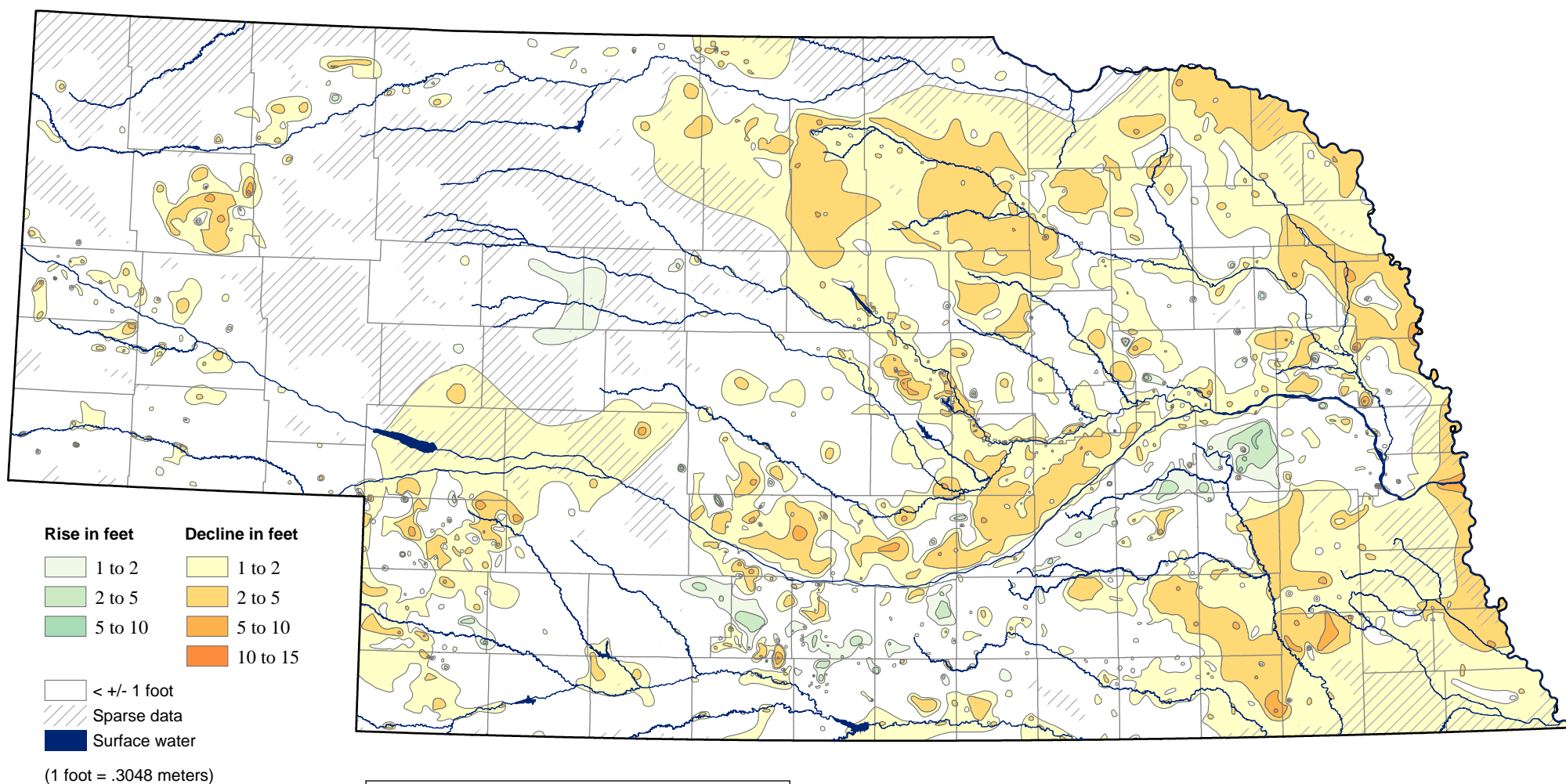


Groundwater-Level Changes in Nebraska - Spring 2021 to Spring 2022



For an explanation of information presented on this map, see the 2022 Nebraska Statewide Groundwater-Level Monitoring Report, available for download at go.unl.edu/groundwater

CONSERVATION AND SURVEY DIVISION (<http://snr.unl.edu/csd>)
 School of Natural Resources (<http://snr.unl.edu>)
 Institute of Agriculture and Natural Resources
 University of Nebraska-Lincoln

Aaron Young, Survey Geologist, CSD
 Mark Burbach, Water Levels Program Supervisor, CSD

Data provided by:

Nebraska Natural Resources Districts
 Central Nebraska Public Power and Irrigation District
 U.S. Geological Survey
 Nebraska Water Science Center
 U.S. Bureau of Reclamation
 Kansas-Nebraska Area Office
 Conservation and Survey Division,
 University of Nebraska - Lincoln

February 2023