

# Introduction To Prescribed Fire Study Guide

Name: \_\_\_\_\_

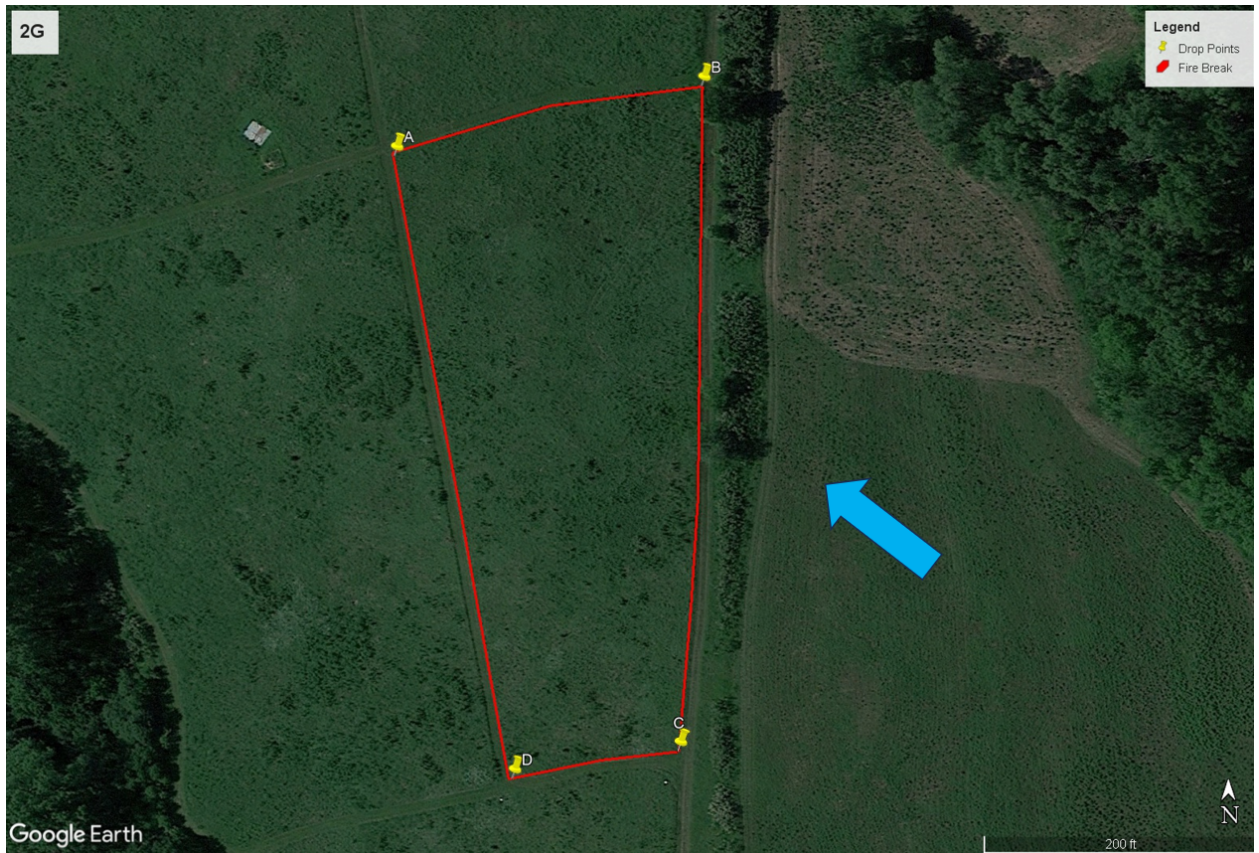
Date: \_\_\_\_\_

(Undergraduate, Graduate, Staff, Faculty)

1. What is prescribed fire?
  
  
  
  
  
  
  
  
  
  
2. Describe three uses of prescribed fire as a management tool.
  
  
  
  
  
  
  
  
  
  
3. What are the three components of the fire triangle?
  - a. \_\_\_\_\_
  - b. \_\_\_\_\_
  - c. \_\_\_\_\_
  
  
  
  
  
  
  
  
  
  
4. What are the three major environmental factors that affect fire behavior?
  - a. \_\_\_\_\_
  - b. \_\_\_\_\_
  - c. \_\_\_\_\_
  
  
  
  
  
  
  
  
  
  
5. Relative humidity (RH) is at its minimum when the temperature reaches its daily maximum.
  - a. True
  - b. False
  
  
  
  
  
  
  
  
  
  
6. What are four characteristics of Critical Fire Weather Conditions?

7. What is the type of fire that is lit on the downwind side of the fire and typically has lower intensity fire behavior?
  - a. Head fire
  - b. Flanking fire
  - c. Backing fire
8. Describe the Ring Firing Technique

9. Based on this unit and wind direction, where would the initial ignition/anchor point be?



10. Assuming the ring firing technique is utilized to complete this burn, where would the predicted tie-in-point be?

11. What is wet lining?

12. Describe two goals during the mopup stage?

- a. \_\_\_\_\_
- b. \_\_\_\_\_

13. What are the three fire line roles on a UNL fire and what are their specific tasks?

- a. \_\_\_\_\_
- b. \_\_\_\_\_
- c. \_\_\_\_\_

14. When using a radio, radio traffic is initiated by stating your name then who you are trying to contact.

- a. True
- b. False

15. 100% cotton or wool clothing and undergarments are the minimum required PPE, as these materials will not melt to your body.

- a. True
- b. False

16. What are the five pieces of PPE you are required to wear on UNL prescribed fire?

- a. \_\_\_\_\_
- b. \_\_\_\_\_
- c. \_\_\_\_\_
- d. \_\_\_\_\_
- e. \_\_\_\_\_

17. Name three pieces of equipment used on prescribed fire?

- a. \_\_\_\_\_
- b. \_\_\_\_\_
- c. \_\_\_\_\_

18. When using a flapper you,

- a. Swat at the fire to beat out the fire
- b. Slowly drag the flapper across the fire to remove oxygen
- c. Use the flapper as a fan to increase rate of ignition

19. What must you wear to a UNL prescribed fire?

20. What should you bring to a UNL prescribed fire?

Below, please leave any questions or comments you may have on the presentation or prescribed fire in general.